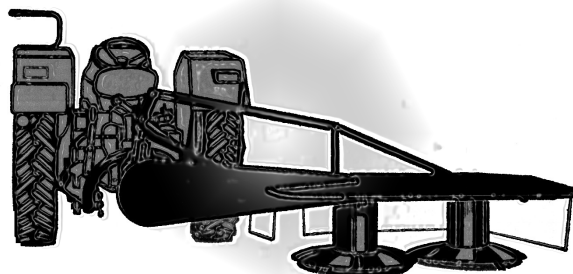
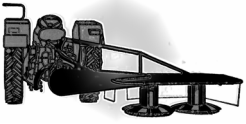




FALCIATRICI ROTATIVE

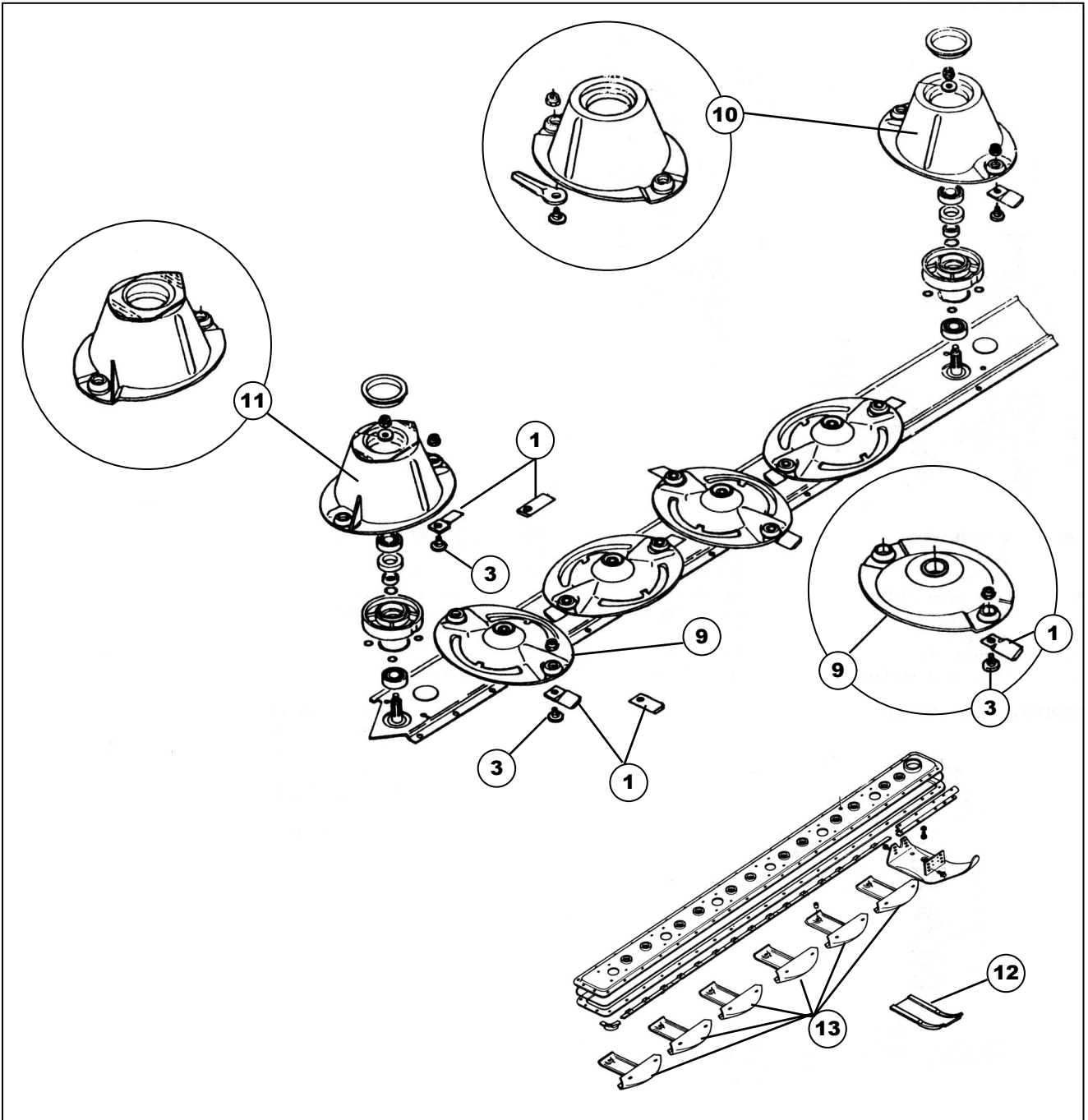
ROTARY MOWERS





BARRA FALCIANTE A DISCHI

Disc Mower Cutterbar



01

A

B

C

D

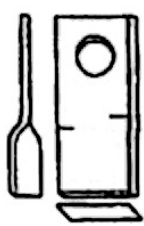
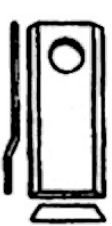
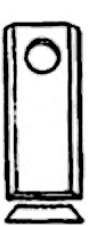
E

F

G

H

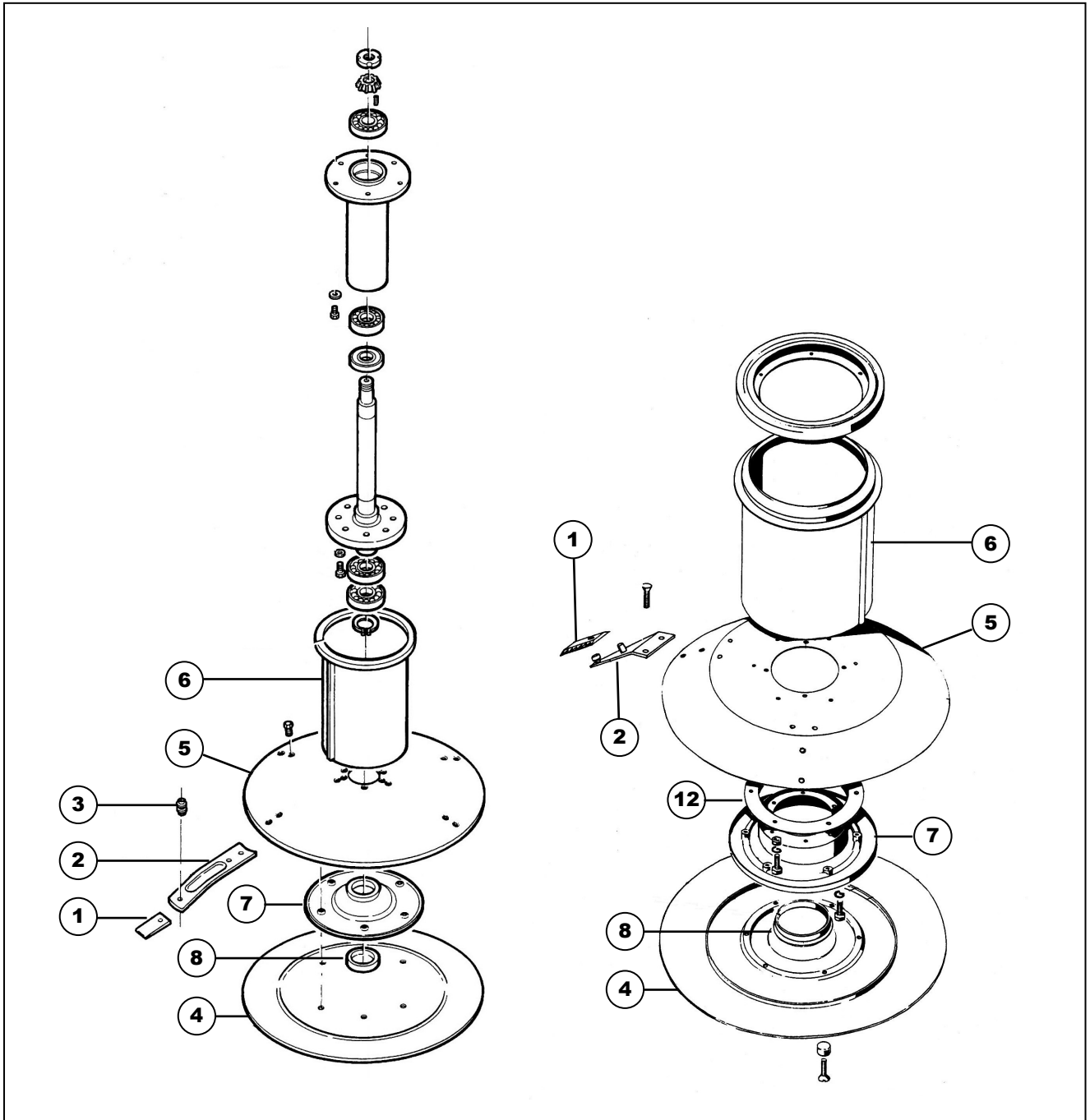
L



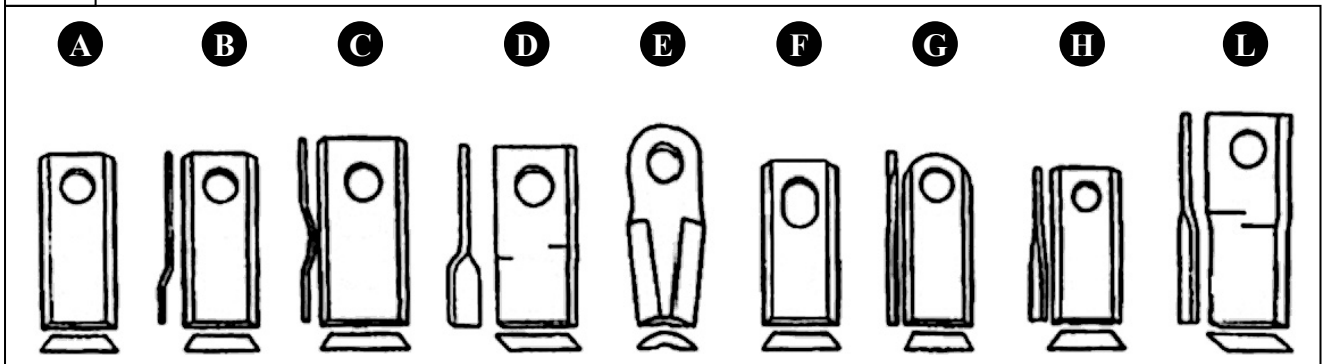


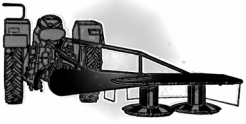
BARRA FALCIANTE A TAMBURI

Drum Mower Cutterbar



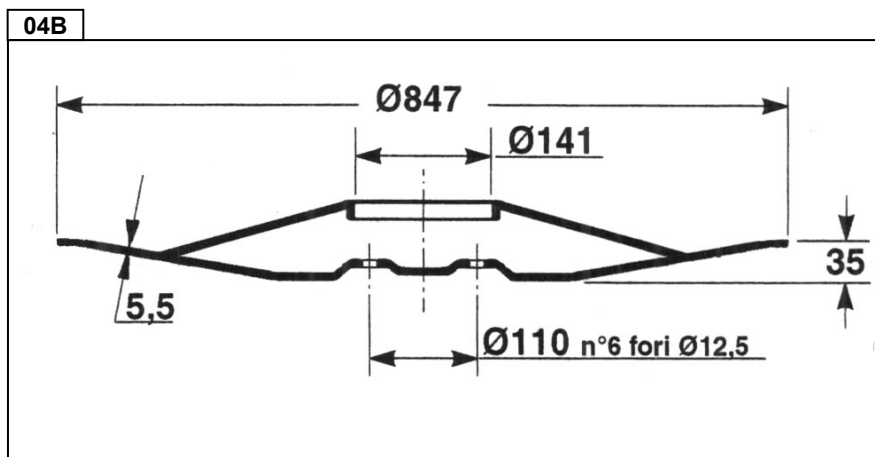
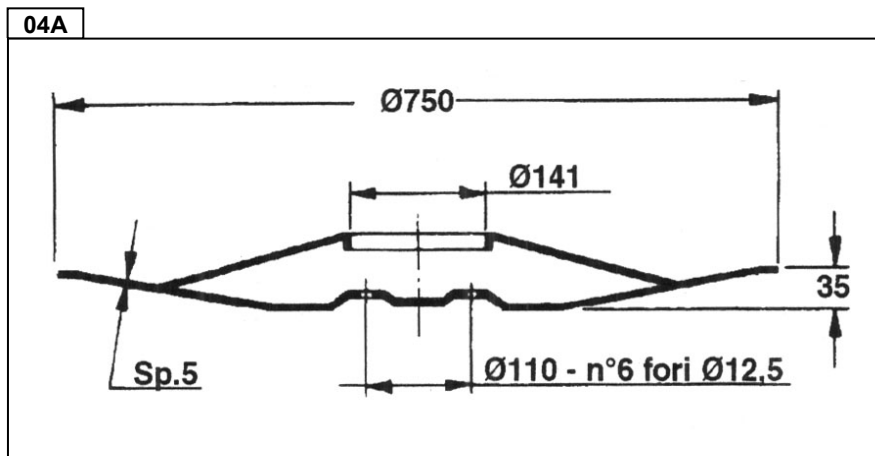
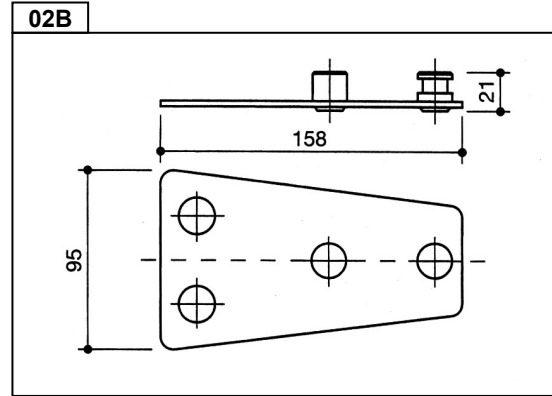
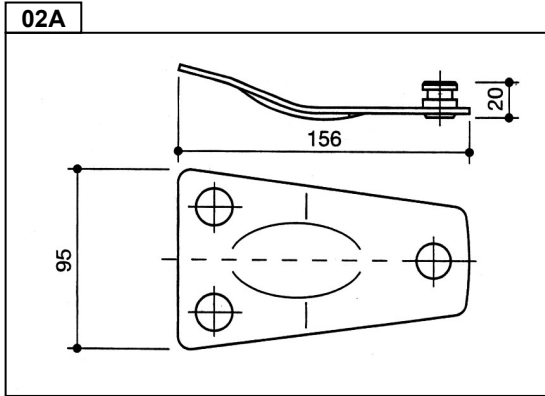
01





CLAAS

Barra Falciante - *Cutterbar*





Pos.	Orig. Ref.	RIMA Ref.	Description	Application	Pack.
Cutterbar					
01A	949240.0	RM34-089	Blade 96x40x4 hole 19		25
	977516.0	RM34-001	Blade 88x40x3 hole 19	088 D	25
	978241.4	RM34-005	Blade 96x40x3 hole 19	096 D	25
01C	104004.1	RM34-009	Blade 105x46x3 hole 19	CM120 -105PZ	25
01G	104555.0	RM34-058	Blade 121x45x4 lh hole 18	56451200	25
	104556.0	RM34-059	Blade 121x45x4 rh hole 18	56451300	25
01H	104266.0	RM34-081	Blade 106x49x3 lh hole 21		25
	104267.0	RM34-082	Blade 106x49x3 rh hole 21		25
	949241.1	RM34-073	Blade 105x48x4 rh hole 19		25
	949242.1	RM34-074	Blade 105x48x4 lh hole 19		25
01L	104339.0	RM34-083	Blade 94x48x3 lh hole 19		25
	104340.0	RM34-084	Blade 94x48x3 rh hole 19		25
	904177.7	RM34-042	Blade 100x48x3 rh hole 19		25
	904177.8	RM34-087	Blade 105x48x3 rh hole 19		25
	904178.7	RM34-043	Blade 100x48x3 lh hole 19		25
	904178.8	RM34-088	Blade 105x48x3 lh hole 19		25
	952042.0	RM34-090	Blade 115x48x4 rh hole 19		25
	952043.0	RM34-091	Blade 115x48x4 lh hole 19		25
	952728.0	RM34-042	Blade 100x48x3 rh hole 19	904177,7	25
	952729.0	RM34-043	Blade 100x48x3 lh hole 19	904178,7	25
02	904521.2	RM46-026	Retainer		1
	948459.2	RM46-060	Retainer	x coltello sp. 4mm (altern 950954.1)	1
	949268.1	RM46-065	Retainer	x coltello sp. 3mm - Corto 270	1
	950951.0	RM46-075	Retainer	x coltello sp. 3mm	1
	950954.1	RM46-076	Retainer	x coltello sp. 3mm	1
	950956.1	RM46-077	Retainer	x coltello sp. 4mm (altern 949268.1)	1
02A	921065.2	RM46-079	Retainer		1
02B	947427.2	RM46-014	Retainer	x coltello sp. 4mm (altern 950951.0)	1
03	RM37-009	RM37-009	Retainer pin		10
04	904541	RM38-247	Soucer diam.760mm	WM20/20C/30/31F	1
	947432	RM38-084	Soucer diam.750mm	WM30/35/165	1
	947437	RM38-085	Soucer diam.840mm	WM24/24C/185/Corto185	1
	947442	RM38-250	Soucer diam.620mm	Corto270F/290F/290S/300	1
	948467	RM38-249	Soucer diam.980mm	WM210/210N/210S/Corto210	1
	949272	RM38-216	Soucer diam.530mm	Corto270F	1
09	905014	RM38-217	Disc	Disco 520	1
	951510		Disc		1
	952340		Disc		1

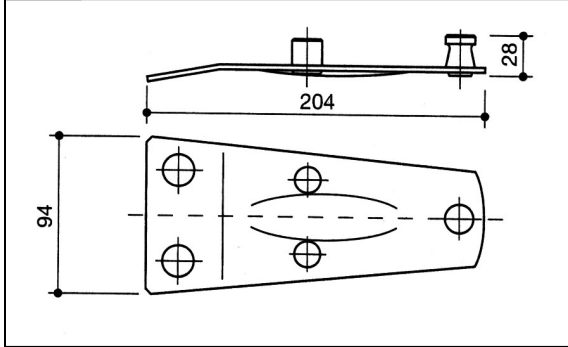


DEUTZ FAHR

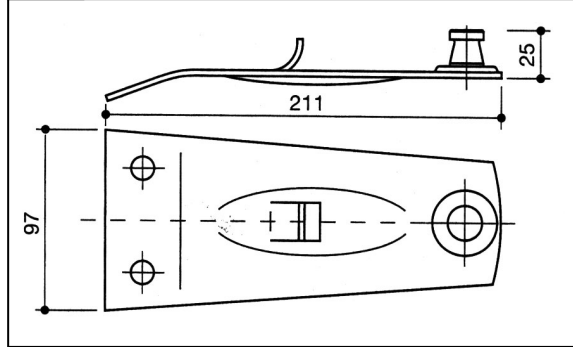
Barra Falciante - *Cutterbar*



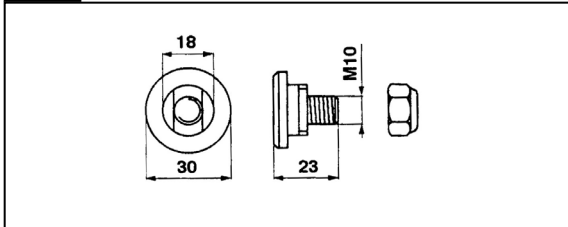
02A



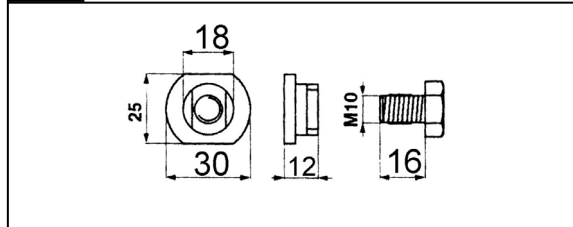
02B



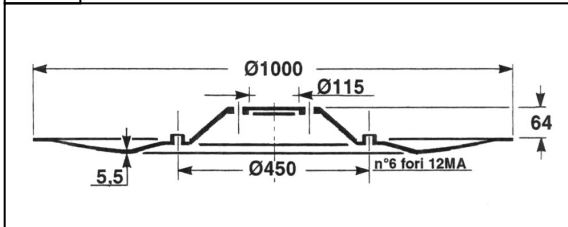
03A



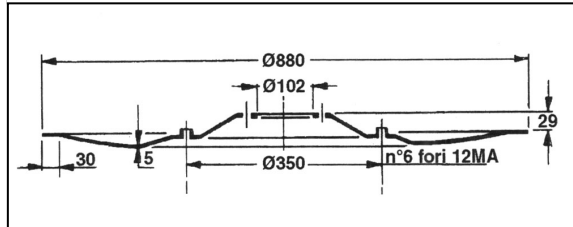
03B



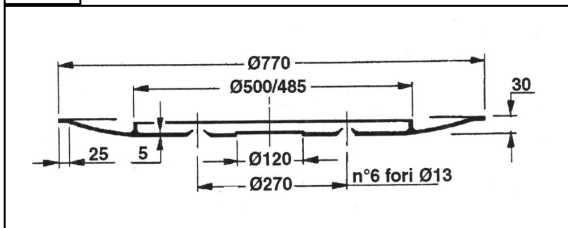
04A



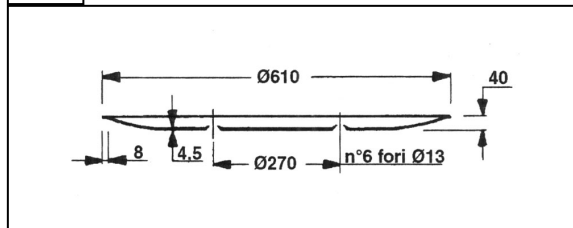
04B



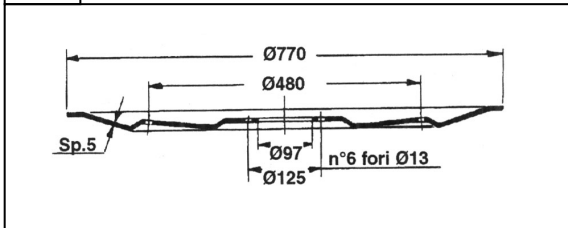
04C



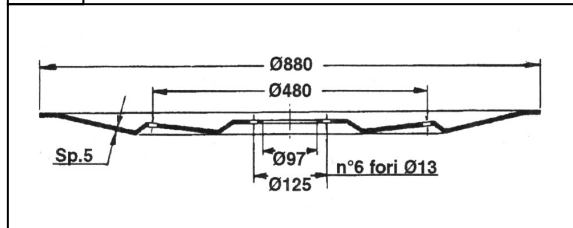
04D



04E



04F



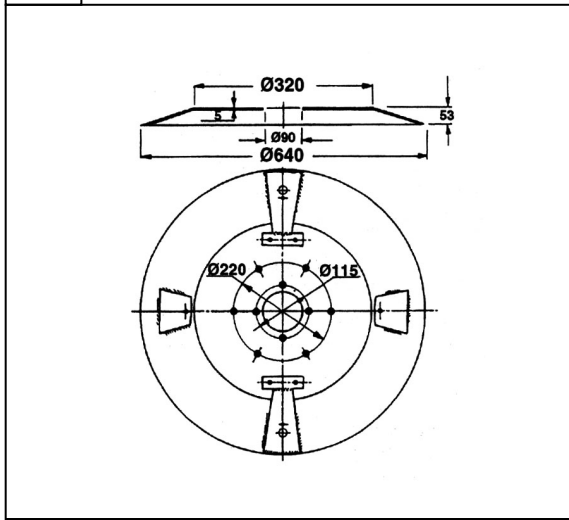


DEUTZ FAHR

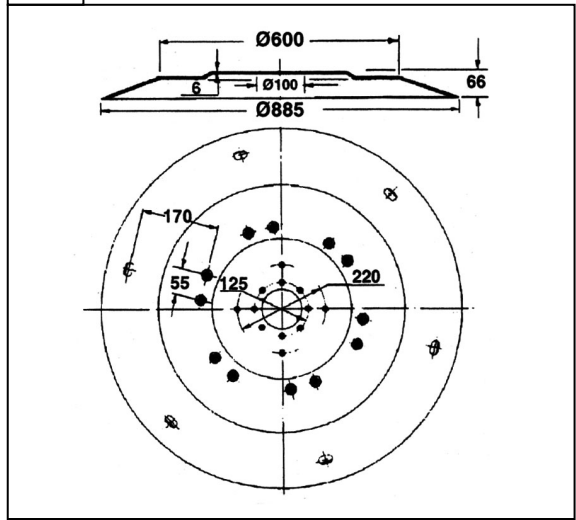
Barra Falciante - Cutterbar



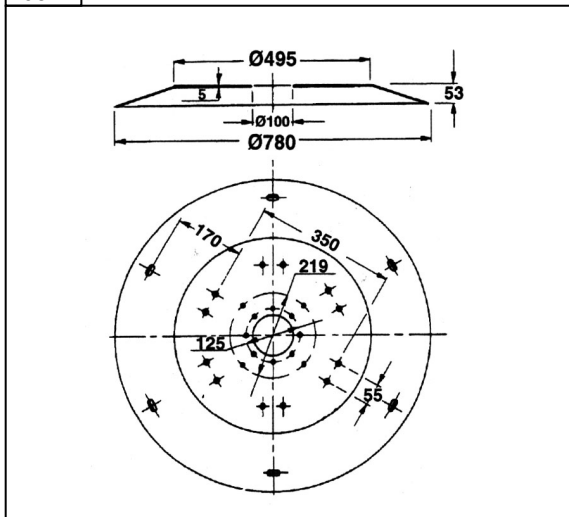
05A



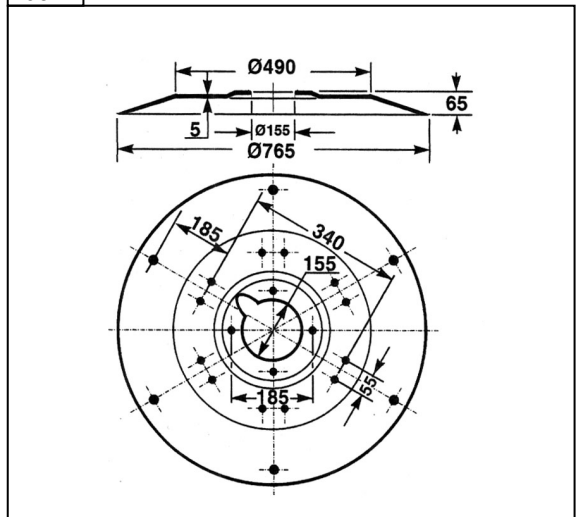
05B



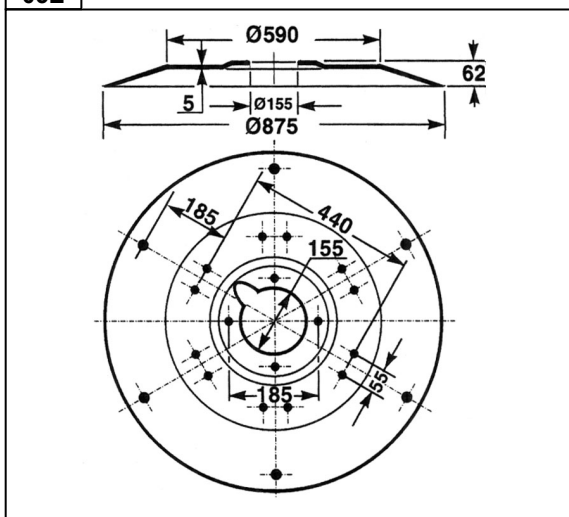
05C



05D

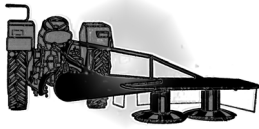


05E





Pos.	Orig. Ref.	RIMA Ref.	Description	Application	Pack.
Cutterbar					
	0622.8342	RM38-132	Bushing		10
	0622.8344	RM38-154	Sprocket		1
	0622.8347	RM38-133	Bushing	KM20-KM22-KM24-KM25	1
	0622.8349	RM38-134	Ring		1
	0622.8352	RM38-135	Bushing		1
	0622.8389	RM38-162	Bushing		1
	0622.9594	RM38-136	Bushing		1
	0629.5640	RM38-157	Hub		1
	0656.3480	RM38-069	Drum cover	KM20-KM22-KM24	1
	0656.3620	RM38-138	Shaft	KM24	1
	0656.3635	RM38-160	Frame support	KM20-KM22 da serie n.51370	1
	0656.7225	RM38-014	Plate	KM24	1
	0656.7235	RM38-158	Hub	KM24	1
	0656.7746	RM38-155	Bushing		1
	0656.8453	RM38-218	Frame support	KM20-KM22 fino a serie 51369	1
	0656.8455	RM38-161	Shaft	KM20-KM22	1
	0658.0765	RM38-153	Shaft		1
	0658.0801	RM38-070	Drum cover	KM25	1
	0658.0805	RM38-015	Plate	KM25	1
	0658.6949	RM38-145	Plate 515mm	KM2.17/KM2.19	1
	0658.9004		Plate 540mm	KM2.17/KM2.19	1
	0658.9630	RM38-156	Hub		1
	RM38-075	RM38-075	Protection	tutti i modelli	1
01A	0656.1542	RM34-005	Blade 96x40x3 hole 19	096 D - 1.1012.030.115.00	25
	0656.1543	RM34-001	Blade 88x40x3 hole 19	088 D - 1.1019.010.271.20	25
01B	0656.1544	RM34-006	Blade 96x40x3 hole 19	096 P - 1.1017.010.153.00	25
01H	0656.1546	RM34-046	Blade 96x40x3 rh hole 19	1.1603.010.198.00	25
	0656.1547	RM34-047	Blade 96x40x3 lh hole 19	1.1603.010.197.00	25
	0656.6282	RM34-131	Blade 98x40x4 lh hole 16,2	DM303	25
	0656.6283	RM34-132	Blade 98x40x4 rh hole 16,2	DM304	25
02	0658.0017	RM46-015	Retainer	1.1012.010.630.00	1
	0658.0109	RM46-027	Retainer	KM20	1
	0658.0126	RM46-007	Retainer	1.1019.010.854.00	1
	1650.1922	RM46-007	Retainer		1
02A	0656.3514	RM46-001	Retainer	KM22-KM24-KM25	1
02B	1650.0771	RM46-029	Retainer	KM2.17-KM2.19	1
03	RM37-001		Washer		10
	RM37-002		Retainer pin		10
03A	0656.8555	RM47-021	Bolt		10



DEUTZ FAHR

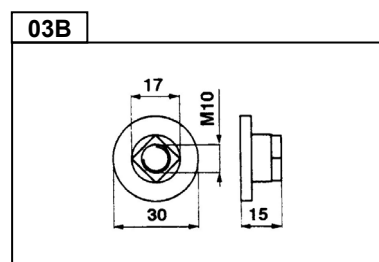
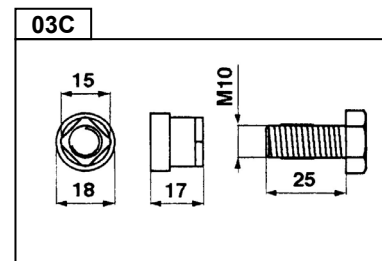
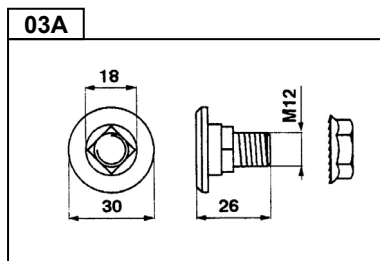
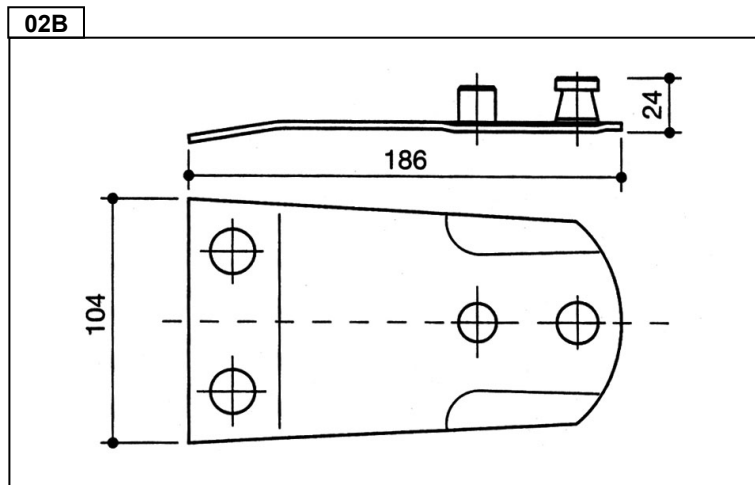
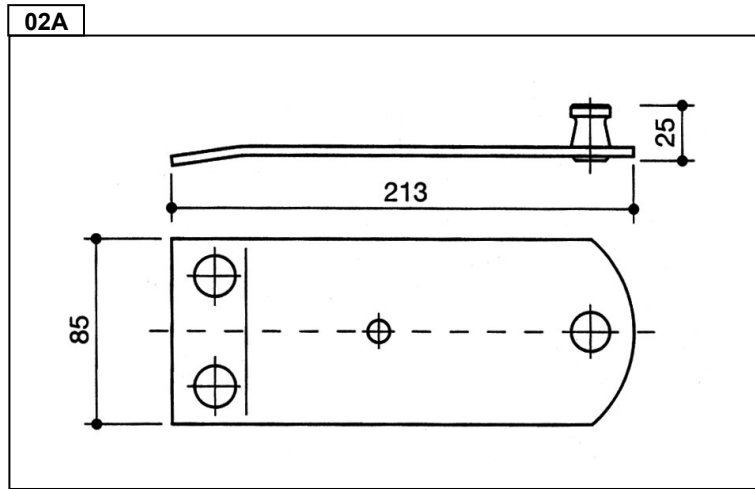


Pos.	Orig. Ref.	RIMA Ref.	Description	Application	Pack.
03B	0656.1225	RM47-019	Bolt	0656.1225+0114.1150-716.06.032.0	10
04	0658.4954	RM38-144	Soucer diam.607mm	KM2.27FS	1
04A	0656.0818	RM38-013	Soucer diam.995mm	KM25	1
04B	0656.7399	RM38-012	Soucer diam.880mm	KM24	1
04C	0656.7882	RM38-011	Soucer diam.770mm	KM22 da serie n.18070	1
04D	0658.0103	RM38-010	Soucer diam.620mm	KM20 da serie n.5101	1
04E	0658.8640	RM38-081	Soucer diam.770mm	KM2.17	1
04F	0658.8641	RM38-082	Soucer diam.875mm	KM2.19	1
05	0656.7402	RM38-068	Cutting disc diam.1006mm	KM25	1
05A	1101801010000	RM38-007	Cutting disc diam.630mm	KM20	1
05B	0656.7379	RM38-009	Cutting disc diam.880mm	KM24	1
05C	0656.3481	RM38-008	Cutting disc diam.780mm	KM22	1
05D	0658.8888	RM38-092	Cutting disc diam.780mm	KM2.17	1
05E	0658.8889	RM38-077	Cutting disc diam.880mm	KM2.19	1
06	0656.0812	RM38-018	Drum 346x265	KM25	1
	0656.3516	RM38-016	Drum	KM20-KM22-KM24	1
07	0622.8357	RM38-072	Disc holder	KM20-KM22	1
09	0656.1453	RM38-152	Disc	SM45-SM45R	1



FELLA

Barra Falciante - *Cutterbar*



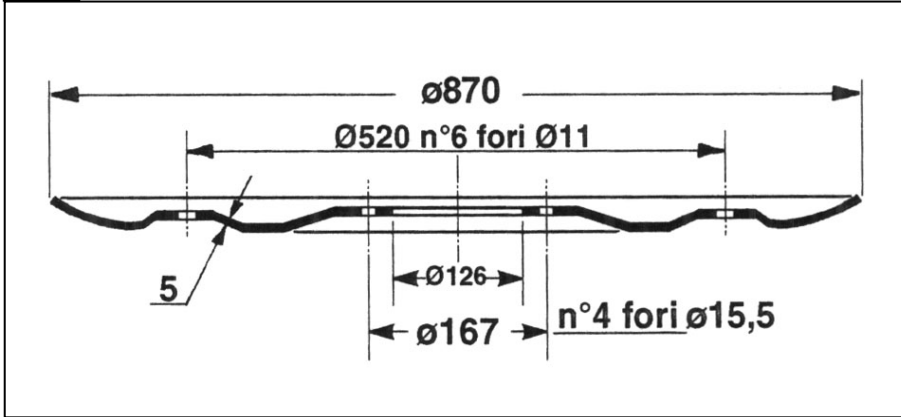


FELLA

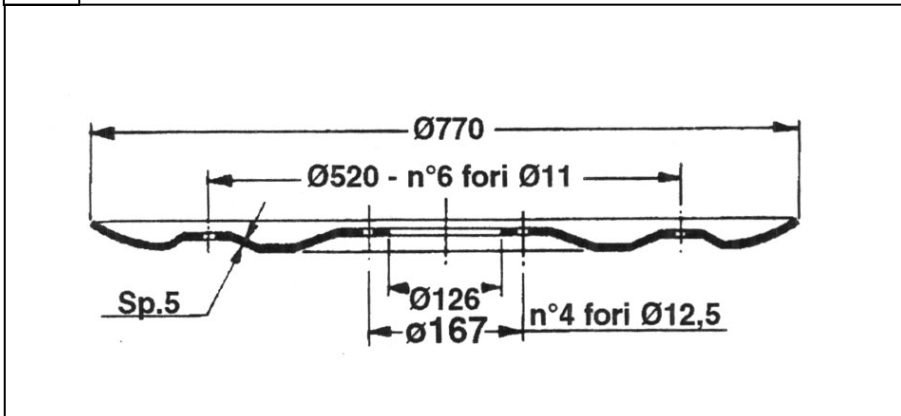
Barra Falciante - *Cutterbar*



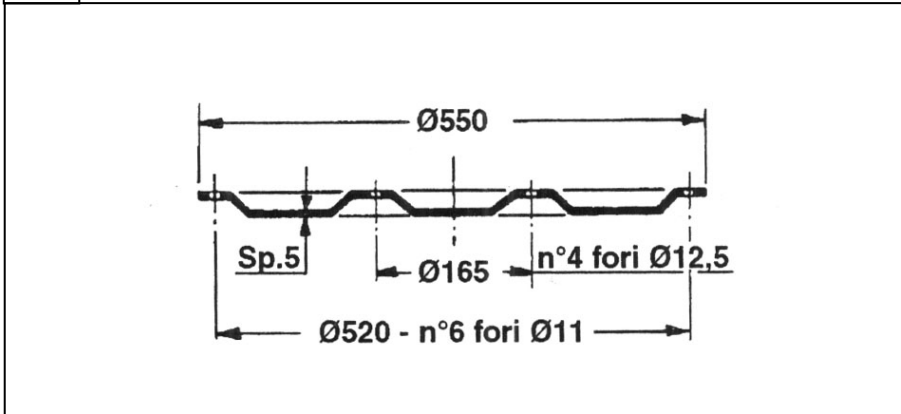
04A



04B



07A





FELLA



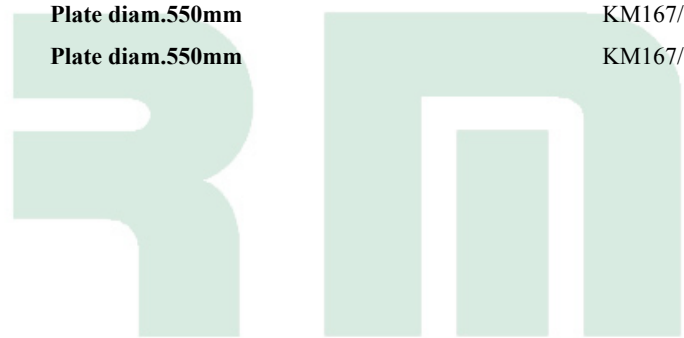
Pos.	Orig. Ref.	RIMA Ref.	Description	Application	Pack.
Cutterbar					
01A	116948	RM34-093	Blade 85x40x4 hole 19,5		25
	116954	RM34-005	Blade 96x40x3 hole 19	096 D	25
	116956	RM34-094	Blade 96x40x4 hole 19	096 D spessore 4mm	25
	477016	RM34-093	Blade 85x40x4 hole 19,5	116948	25
	477740	RM34-005	Blade 96x40x3 hole 19	096 D	25
	477741	RM34-001	Blade 88x40x3 hole 19	088 D	25
	477762	RM34-094	Blade 96x40x4 hole 19	096 D spessore 4mm	25
01B	124243	RM34-008	Blade 98x40x3 hole 19	098 P	25
	478962	RM34-008	Blade 98x40x3 hole 19	098 P	25
	478963	RM34-006	Blade 96x40x3 hole 19	096P	25
01L	111724	RM34-021	Blade 120x50x4 lh hole 18,5	58699	25
	111725	RM34-022	Blade 120x50x4 lh hole 18,5	58700	25
	121692	RM34-064	Blade 94x48x3 lh hole 19	570410	25
	121693	RM34-063	Blade 94x48x3 rh hole 19	570409	25
	121712	RM34-038	Blade 98x48x4 lh hole 19		25
	121713	RM34-039	Blade 98x48x4 rh hole 19		25
	122329		Blade 106x48x4 lh hole 19		25
	122330		Blade 106x48x4 rh hole 19		25
	131117	RM34-099	Blade 112x48x4 rh hole 19	123707	25
	131118	RM34-098	Blade 112x48x4 lh hole 19	sost.123706	25
	133074	RM34-168	Blade 118x48x4 hole 19	sost.135563	25
	133075	RM34-169	Blade 118x48x4 hole 19	sost.135564	25
	134308	RM34-099	Blade 112x48x4 rh hole 19	sost. 131117	25
	140692		Blade 102x48x4 rh hole 19		25
	140693		Blade 102x48x4 lh hole 19		25
	478640	RM34-021	Blade 120x50x4 lh hole 18,5	58699	25
	478641	RM34-022	Blade 120x50x4 rh hole 18,5	58700	25
02	121248	RM46-031	Retainer OR		1
	122537	RM46-053	Retainer OR		1
	478192	RM46-030	Retainer OR		1
02A	121879	RM46-024	Retainer		1
02B	122113	RM46-023	Retainer		1
03	RM37-010		Retainer pin		10
03A	426023K	RM47-022	Bolt	133862K-426887K-426053K	10
	426053K	RM47-022	Bolt	133862K-426887K	10
	476125K	RM47-022	Bolt	133862K-426887K-426053K	10
03B	477263K	RM47-006	Bolt	116953 (477274+477263)	10
03C	478415K	RM47-013	Bolt	118286 (478518+478415)	10
04	101195	RM38-019	Soucer diam.890mm - hub 112mm	KM190/A/KC KM191/A KC187	1



FELLA



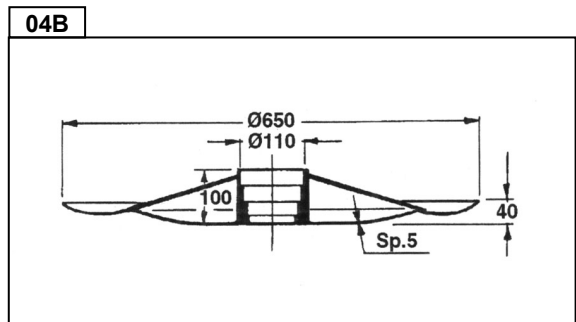
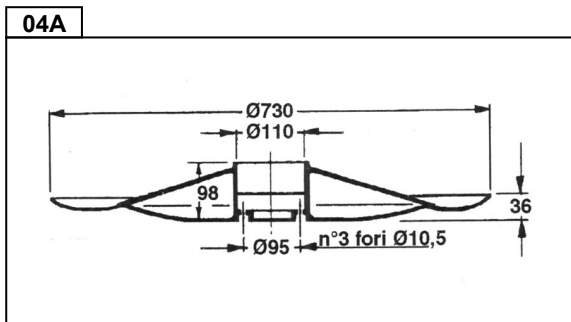
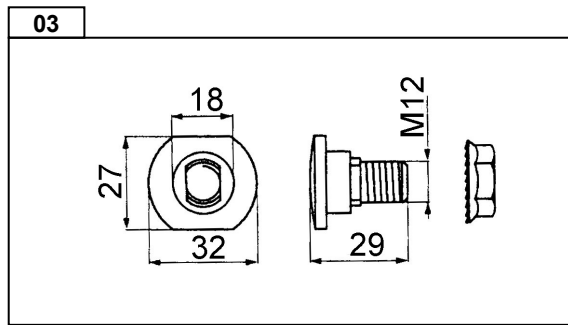
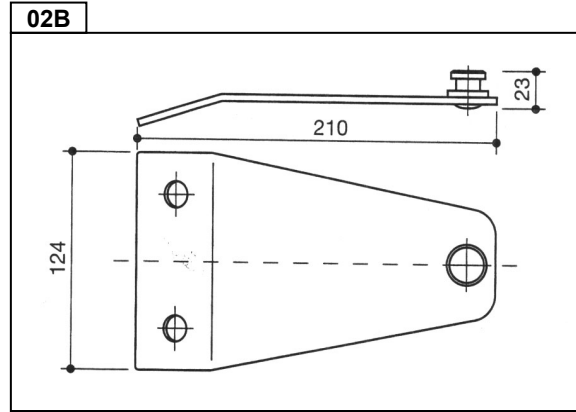
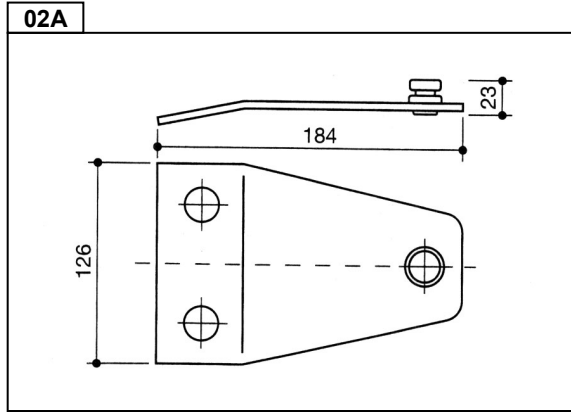
Pos.	Orig. Ref.	RIMA Ref.	Description	Application	Pack.
04	101206	RM38-219	Soucer diam.885mm - hub 100mm	KM192/4/A/KC KM200F	1
	140179	RM38-089	Soucer diam.585mm	KM265F/KM270F	1
	140507	RM38-089	Soucer diam.585mm	KM265F/KM270F	1
	475299	RM38-019	Soucer diam.890mm - hub 112mm	KM190/A/KC KM191/A KC187	1
	476025	RM38-219	Soucer diam.885mm - hub 100mm	KM192/4/A/KC KM200F	1
	478847	RM38-019	Soucer diam.890mm - hub 112mm	KM190/A/KC KM191/A KC187	1
	496241	RM38-219	Soucer diam.885mm - hub 100mm	KM192/4/A/KC KM200F	1
	496830	RM38-089	Soucer diam.585mm	KM265F/KM270F	1
	RM38-086		Soucer diam.770mm - hub 100mm	KM250F - 167	1
04A	496098	RM38-088	Soucer diam.880mm	KM187/KM187H	1
04B	496100	RM38-087	Soucer diam.770mm	KM167/KM251F	1
07	140177	RM38-090	Plate diam.360mm	KM270F/KM300F	1
	140311	RM38-091	Plate diam.550mm	KM167/187/187H/251F	1
	496829	RM38-090	Plate diam.360mm	KM270F/KM300F	1
07A	140131	RM38-091	Plate diam.550mm	KM167/187/187H/251F	1
	496097	RM38-091	Plate diam.550mm	KM167/187/187H/251F	1





KRONE

Barra Falciante - *Cutterbar*





KRONE



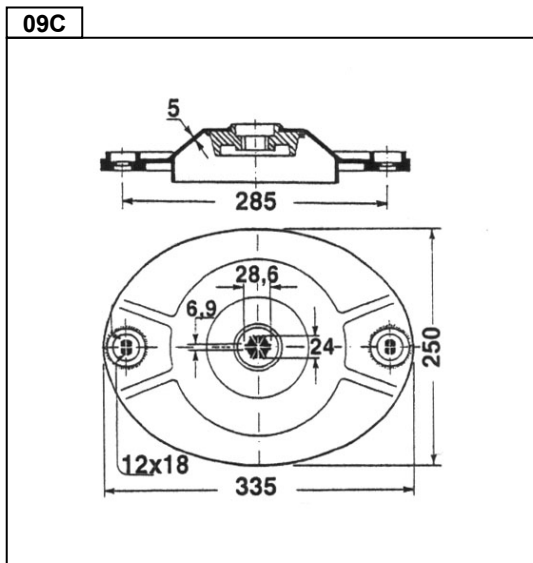
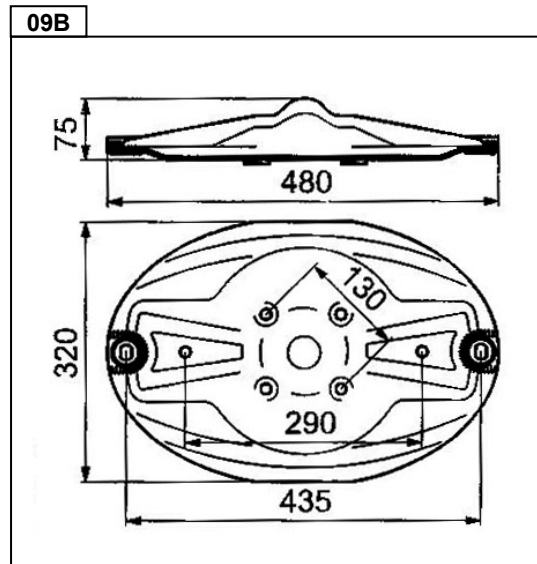
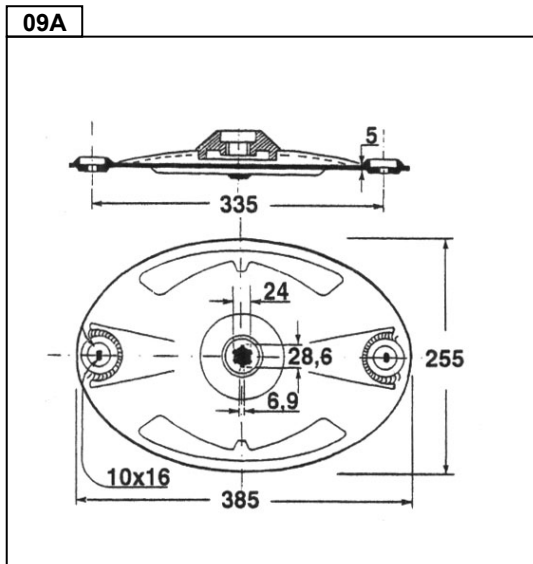
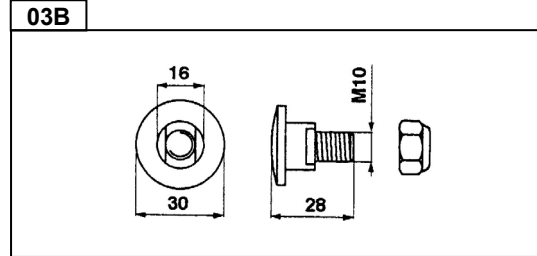
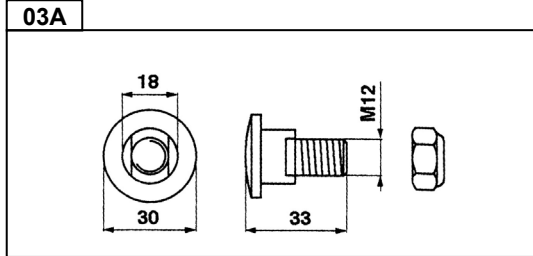
Pos.	Orig. Ref.	RIMA Ref.	Description	Application	Pack.
Cutterbar					
01	0139800		Blade 117x53x4 hole 19		25
01A	141071.0	RM34-001	Blade 88x40x3 hole 19	088 D	25
	143149.3	RM34-001	Blade 88x40x3 hole 19	088 D	25
01C	143237.4	RM34-009	Blade 105x46x3 hole 21	CM120-105PZ	25
01L	0139888		Blade 112x50x4 lh hole 19		25
	0139889		Blade 112x50x4 rh hole 19		25
	146690.0	RM34-036	Blade 96x50x4 lh hole 19		25
	146691.0	RM34-037	Blade 96x50x4 rh hole 19		25
02A	151127.0	RM46-043	Retainer	PZ0243	1
02B	152076.0	RM46-006	Retainer	PZ0250	1
03	1377-26-6K	RM47-004	Bolt	143229+141053	10
04A		RM38-056	Soucer diam.735mm	Mod.165 - GT062	1
04B		RM38-034	Soucer diam.650mm with hub	Mod.135	1

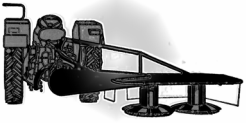




KUHN

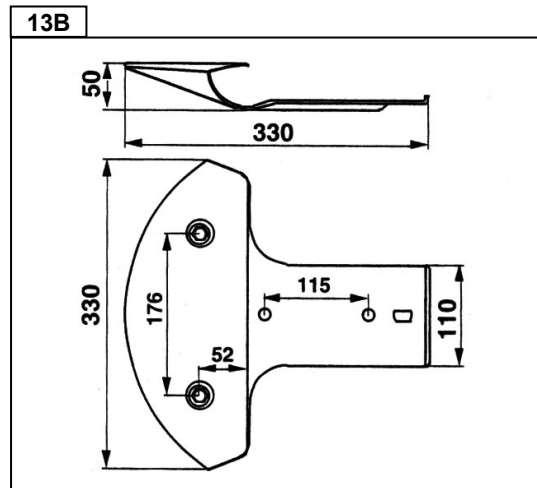
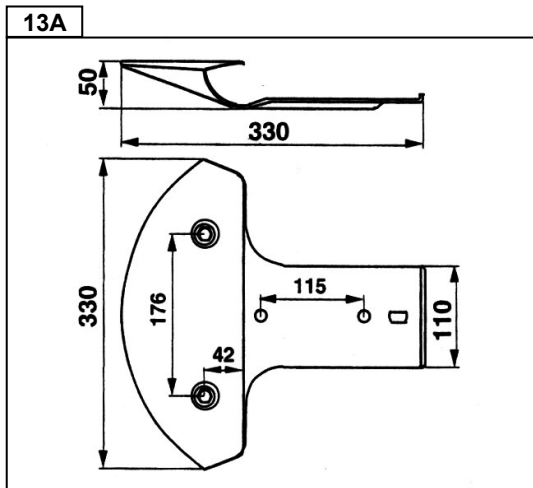
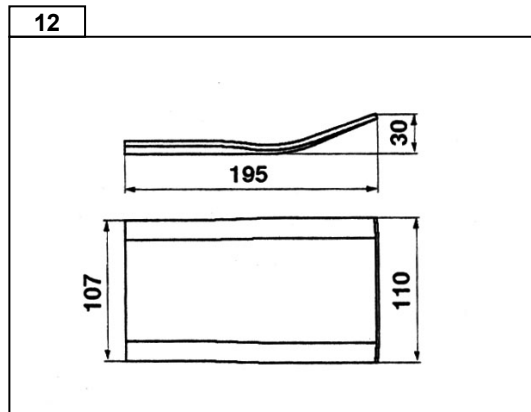
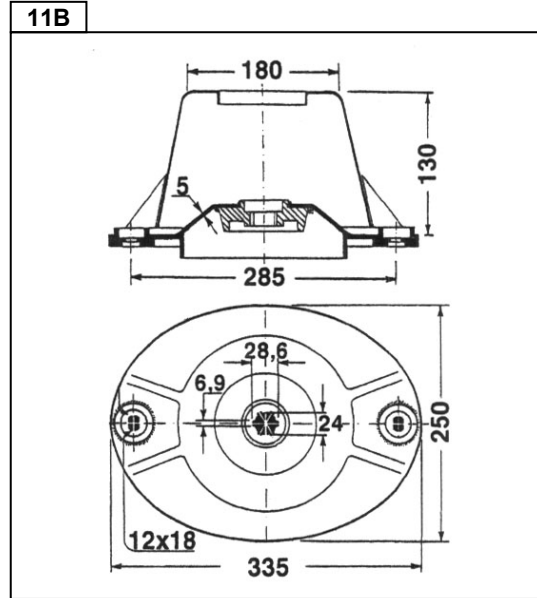
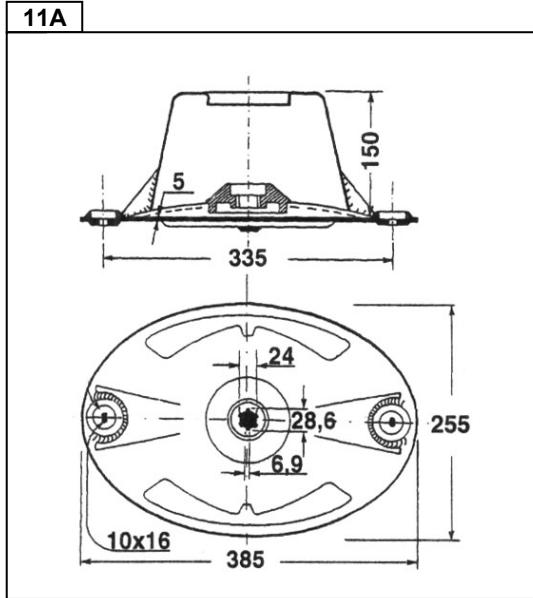
Barra Falciante - *Cutterbar*





KUHN

Barra Falciante - *Cutterbar*

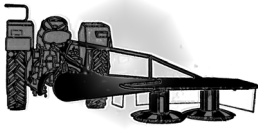




KUHN



Pos.	Orig. Ref.	RIMA Ref.	Description	Application	Pack.
Cutterbar					
01A	56150000	RM34-103	Blade 94x40x3 hole 16,25		25
	56150010	RM34-104	Blade 95x45x3,5 hole 16,25		25
	56451210	RM34-106	Blade 123x45x4 hole 18,2		25
01E	56110200	RM34-033	Blade 160x60/35x3 hole 20,5x23		25
	56110300	RM34-032	Blade 128x50/35x4 hole 20,5x23		25
	56450000	RM34-057	Blade 128x50x4 hole 18,5x20,5	16530208	25
	56840000	RM34-107	Blade 112x50x4 hole 18,5x20		25
01H	55903210	RM34-017	Blade 107x45x4 lh hole 18,2		25
	55903310	RM34-018	Blade 107x45x4 rh hole 18,2		25
	55906000	RM34-100	Blade 115x45x4 lh hole 18,2		25
	55906100	RM34-101	Blade 115x45x4 rh hole 18,2		25
	56151000	RM34-105	Blade 87x40x3 lh hole 16,25		25
	56151100	RM34-166	Blade 87x40x3 rh hole 16,25		25
	56151200	RM34-013	Blade 93x40x3 lh hole 16,25		25
	56151210	RM34-023	Blade 95x45x3,5 lh hole 16,25		25
	56151300	RM34-014	Blade 93x40x3 rh hole 16,25		25
	56151310	RM34-024	Blade 95x45x3,5 rh hole 16,25		25
	56451200	RM34-058	Blade 121x45x4 lh hole 18		25
	56451300	RM34-059	Blade 121x45x4 rh hole 18		25
03	56132100	RM47-008	Bolt M10X21	56210100	10
	56150100	RM47-008	Bolt M10X21	56210100	10
03A	55916100	RM47-007	Bolt	12MA - 56115800 kit	10
	56115800	RM47-007	Bolt	12MA	10
03B	56132200	RM47-008	Bolt	10MA - 56210100 kit	10
	56210100	RM47-008	Bolt	10MA	10
09	56450110	RM38-038	Disc - central reinforced		1
	56812600	RM38-284	Disc - central	GMD400/500 ex 56808200	1
09A	56200700	RM38-035	Disc - central	GMD33-44-55-66	1
09B	55911100	RM38-213	Disc - central	FC202-FC250/300	1
10	56207600	RM38-037	Disc - final	GMD55-66	1
	56450310	RM38-040	Disc - final reinforced		1
	56812700	RM38-286	Disc - final	GMD400/500 ex 56808400	1
11	56813900	RM38-285	Disc - 1st	GMD400/500 ex 56808300	1
11A	56200800	RM38-036	Disc - 1st	GMD33-44-55-66	1
11B	56450210	RM38-039	Disc - 1st reinforced		1
12	55903900	RM38-244	Skid	FC200-202-250-300	1
	55911400	RM38-214	Skid	FC200-202-250-300	1
	56801700	RM38-283	Skid	GMD400/500	1
12A	56330200	RM38-101	Skid	GMD55-55HD	1

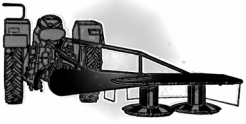


KUHN



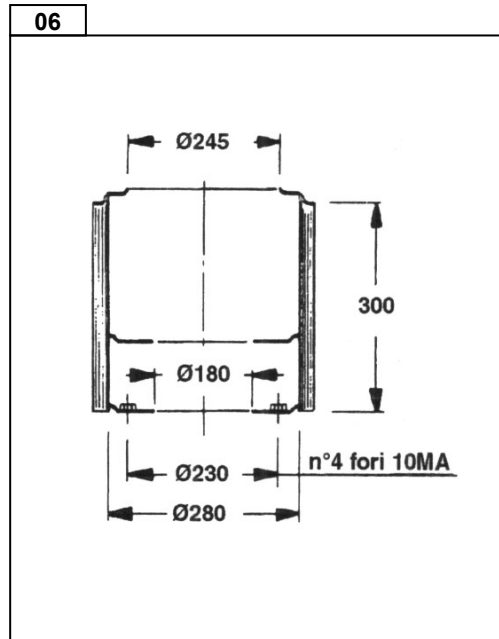
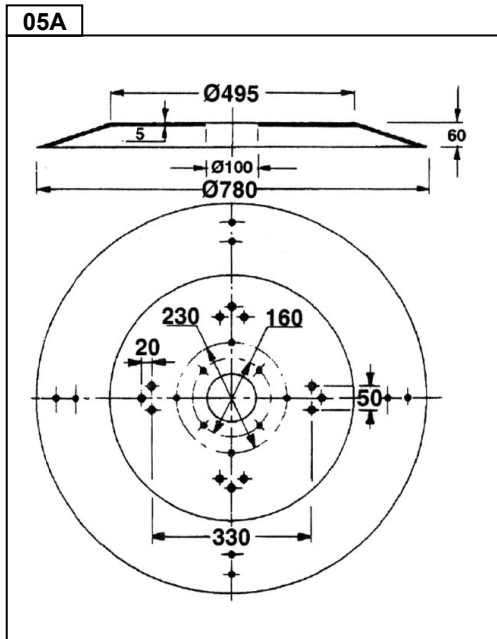
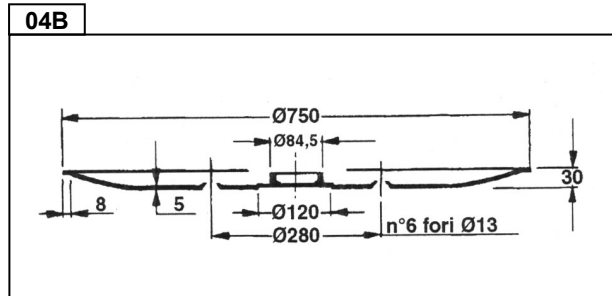
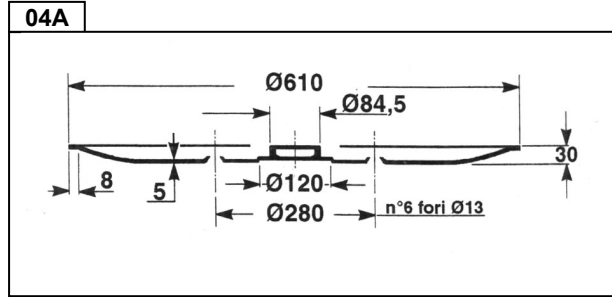
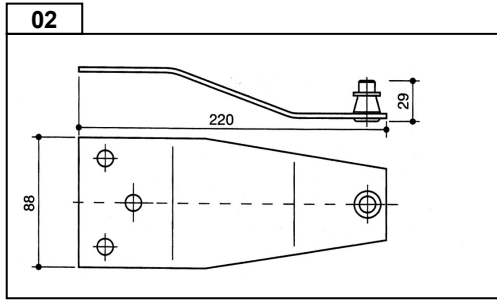
Pos.	Orig. Ref.	RIMA Ref.	Description	Application	Pack.
13	55901200	RM38-242	Stone guard	FC200-202-250-300	1
	55910400	RM38-243	Stone guard - outer disc	FC200-202-250-300	1
	56801420	RM38-282	Stone guard	GMD400/500	1
13A	56190600	RM38-100	Stone guard	GMD33-44-55-66-77	1
13B	56205800	RM38-104	Stone guard	GMD-33-44-55-66-77	1





LINCE

Barra Falciante - *Cutterbar*





LINCE



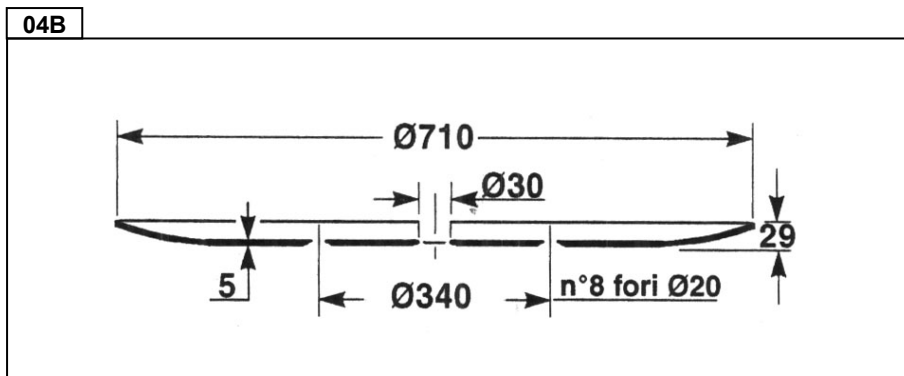
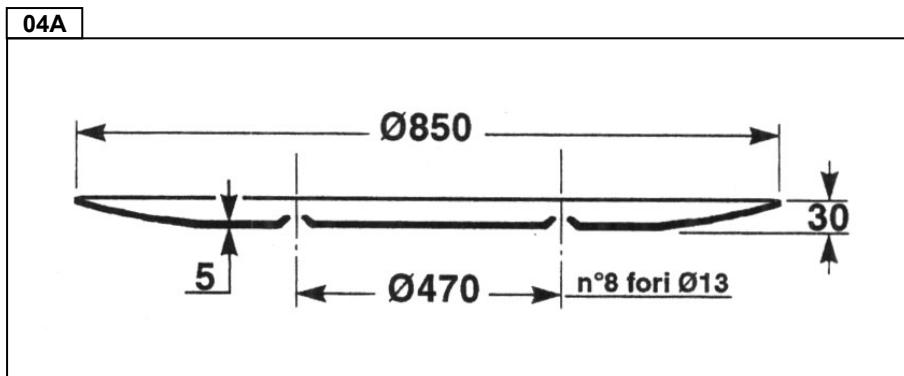
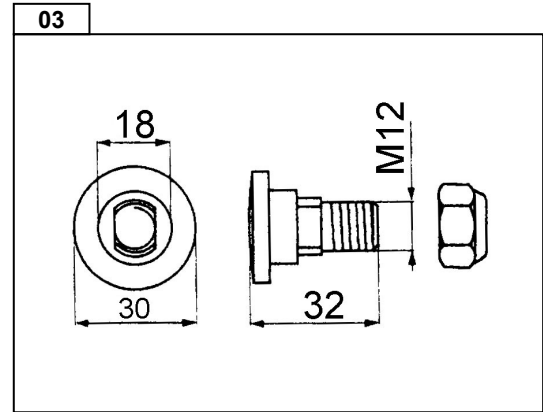
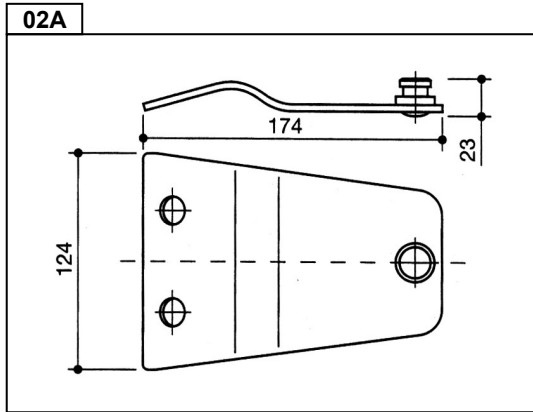
Pos.	Orig. Ref.	RIMA Ref.	Description	Application	Pack.
Cutterbar					
01A	088 D	RM34-001	Blade 88x40x3 hole 19		25
01B	088 P	RM34-002	Blade 88x40x3 hole 19		25
02	7F	RM46-013	Retainer		1
03		RM37-005	Retainer pin		10
04		RM38-131	Soucer diam.875mm	Mod.185	1
04A		RM38-061	Soucer diam.620mm	Mod.135	1
04B		RM38-062	Soucer diam.770mm	Mod.165	1
05		RM38-129	Cutting disc diam.630mm	Mod.135	1
		RM38-130	Cutting disc diam.885mm	Mod.185	1
05A		RM38-060	Cutting disc diam.780mm	Mod.165	1
06		RM38-063	Drum	Mod.165	1





NIEMEYER

Barra Falciante - *Cutterbar*





Pos.	Orig. Ref.	RIMA Ref.	Description	Application	Pack.
Cutterbar					
01A	11065	RM34-001	Blade 88x40x3 hole 19	088 D	25
	570400	RM34-001	Blade 88x40x3 hole 19	088 D	25
	570404	RM34-005	Blade 96x40x3 hole 19	096 D	25
01H	570411	RM34-131	Blade 98x40x4 lh hole 16,2	DM308	25
	570412	RM34-132	Blade 98x40x4 rh hole 16,2	DM304	25
01L	570409	RM34-063	Blade 94x48x3 lh hole 19		25
	570410	RM34-064	Blade 94x48x3 rh hole 19		25
	570413	RM34-143	Blade 100x48x3 lh hole 19		25
	570414	RM34-144	Blade 100x48x3 rh hole 19		25
	570418	RM34-145	Blade 100x48x3 lh hole 19		25
	570419	RM34-146	Blade 100x48x3 rh hole 19		25
02	570426	RM46-034	Retainer		1
	570427	RM46-070	Retainer		1
	570428	RM46-047	Retainer		1
	570429	RM46-048	Retainer		1
	570440	RM46-047	Retainer		1
	570441	RM46-048	Retainer		1
02A	570425	RM46-033	Retainer		1
03	11064	RM47-011	Bolt	503175+510517	10
04A	RM38-098	RM38-098	Soucer diam.850mm	Mod.185	1
04B		RM38-097	Soucer diam.710mm	Mod.165	1

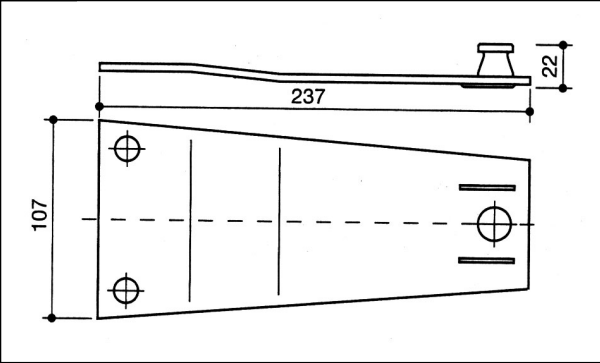


POETTINGER

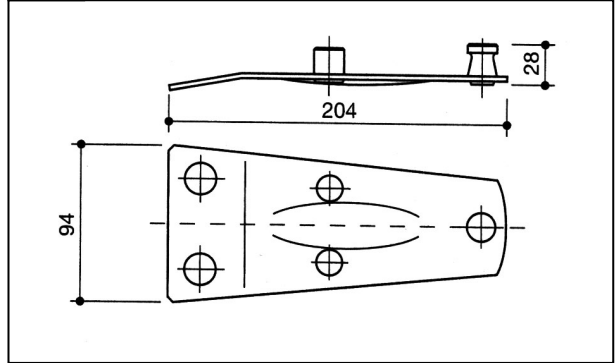
Barra Falciante - *Cutterbar*



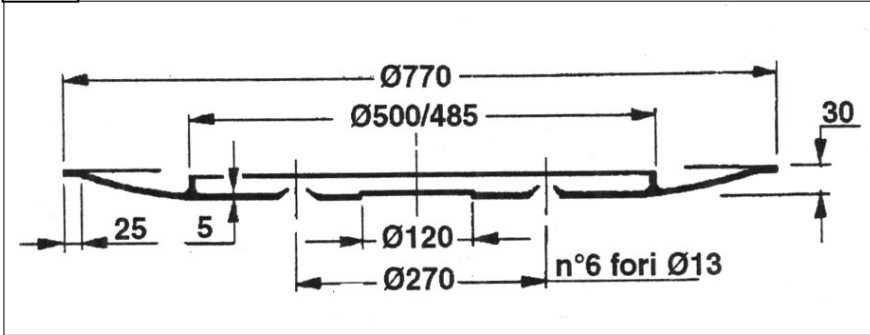
02A



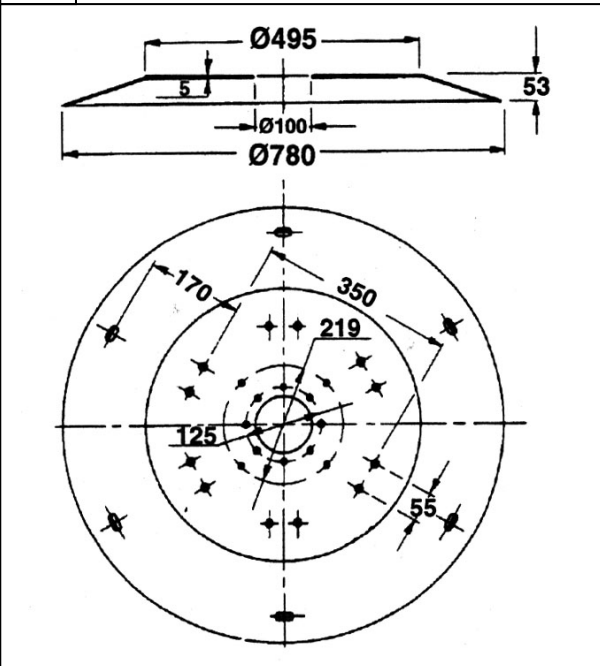
02B



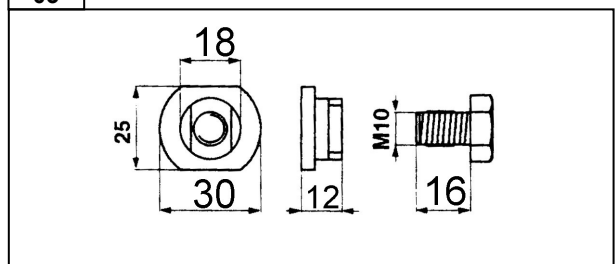
04

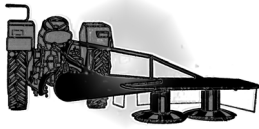


05



03





POETTINGER

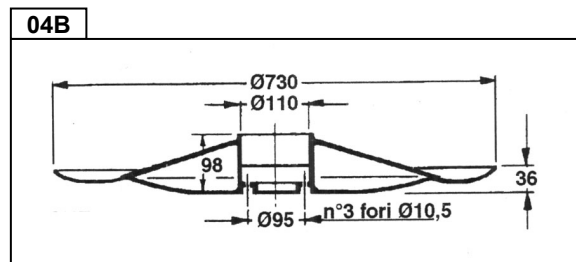
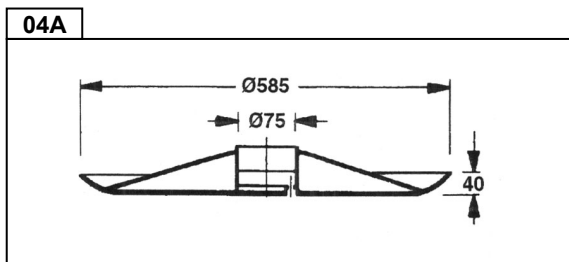
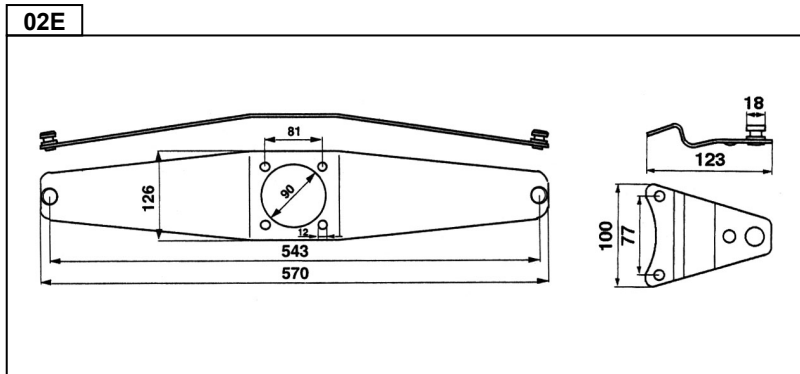
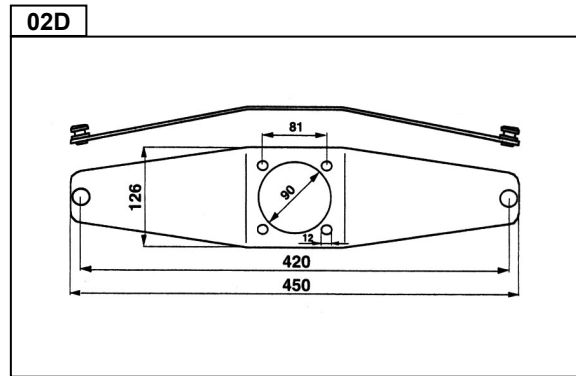
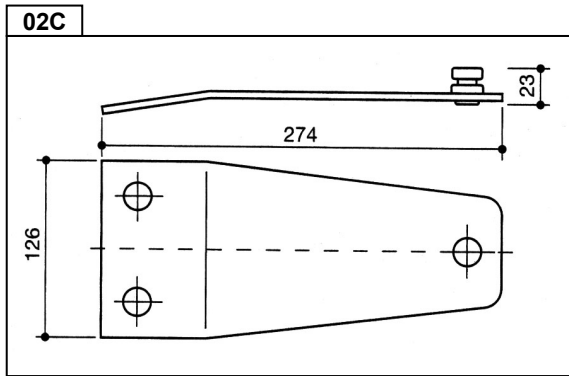
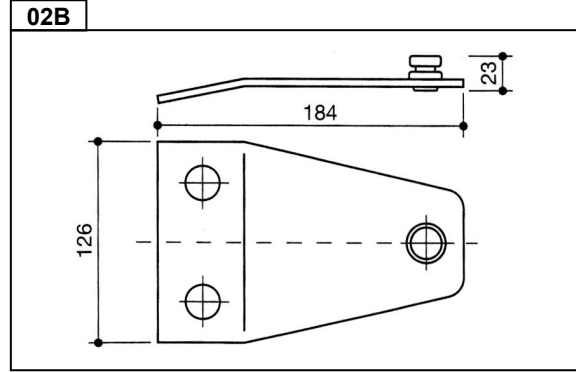
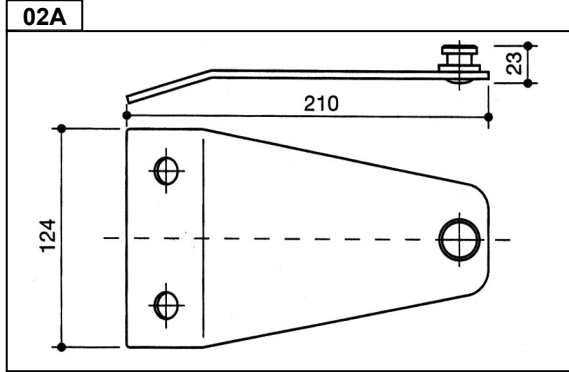


Pos.	Orig. Ref.	RIMA Ref.	Description	Application	Pack.
Cutterbar					
01A	434991	RM34-005	Blade 96x40x3 hole 19	096 D - 700.06.165.0	25
	434992	RM34-001	Blade 88x40x3 hole 19	088 D	25
	434994	RM34-123	Blade 97x50x4 hole 19		25
01B	434122	RM34-062	Blade 119x49x4 hole 21		25
	434993	RM34-006	Blade 96x40x3 hole 19	096 P	25
01C	434120	RM34-009	Blade 105x46x3 hole 21	CM120-105PZ	25
01L	434969	RM34-172	Blade 112x94x4 lh hole 21		25
	434970	RM34-173	Blade 112x94x4 rh hole 21		25
	434971	RM34-170	Blade 108x49x4 lh hole 21		25
	434972	RM34-171	Blade 108x49x4 rh hole 21		25
	434973		Blade 100x49x4 lh hole 21		25
	434974		Blade 100x49x4 rh hole 21		25
	434975	RM34-075	Blade 120x49x4 lh hole 21		25
	434976	RM34-076	Blade 120x49x4 rh hole 21		25
	434977	RM34-108	Blade 100x48x4 lh hole 21		25
	434978	RM34-109	Blade 100x48x4 rh hole 21		25
	434979	RM34-110	Blade 100x48x3 lh hole 19		25
	434980	RM34-111	Blade 100x48x3 rh hole 19		25
	434981	RM34-112	Blade 108x47x4 lh hole 19		25
	434982	RM34-113	Blade 108x47x4 rh hole 19		25
	434983	RM34-043	Blade 100x48x3 lh hole 19		25
	434984	RM34-042	Blade 100x48x3 rh hole 19		25
	434985	RM34-116	Blade 108x47x4 lh hole 19		25
	434986	RM34-117	Blade 108x47x4 rh hole 19		25
	434988	RM34-021	Blade 120x50x4 lh hole 18,5	58699	25
	434989	RM34-022	Blade 120x50x4 rh hole 18,5	58700	25
02A	151.01.759.8	RM46-061	Retainer		1
02B	700.06.046.0	RM46-001	Retainer	0656.3514	1
03	716.06.032.0	RM47-019	Bolt	0656.1225	10
04	707.00.061.731	RM38-011	Soucer diam.770mm	0656.7882	1
05	707.00.061.550	RM38-008	Cutting disc diam.780mm	0656.3481	1



ZWEEGERS PZ

Barra Falciante - *Cutterbar*



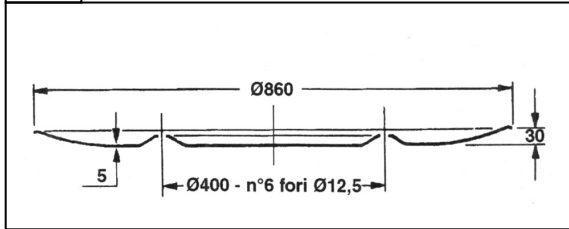


ZWEEGERS PZ

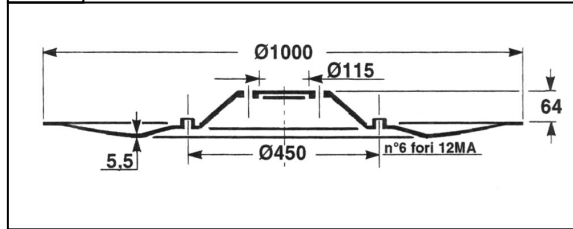
Barra Falcicante - *Cutterbar*



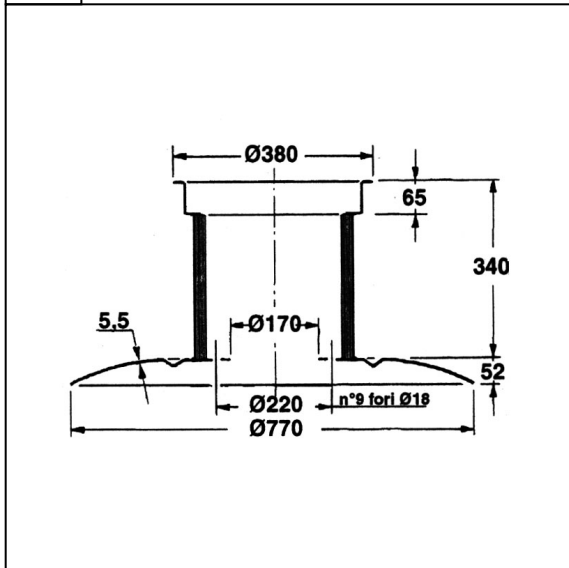
04C



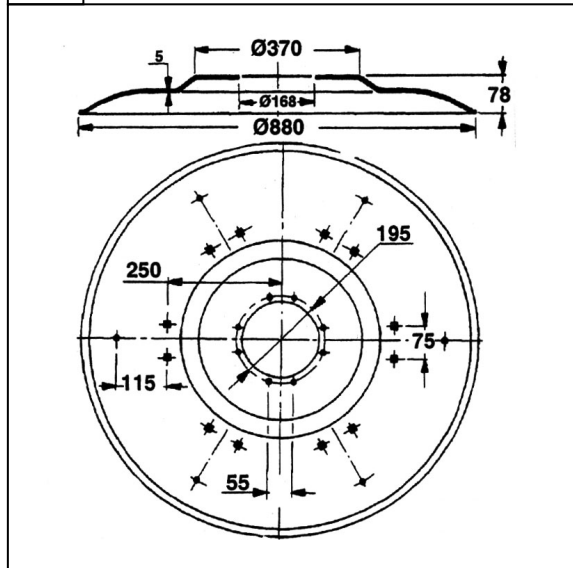
04D



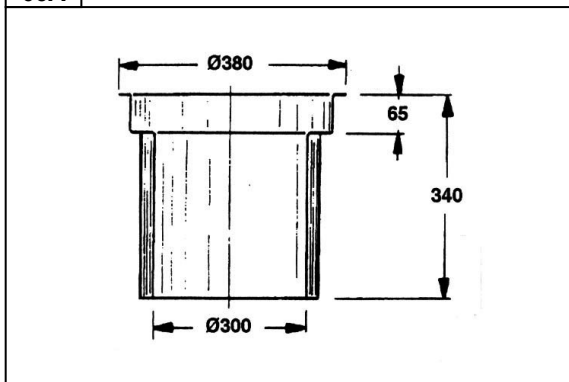
05A



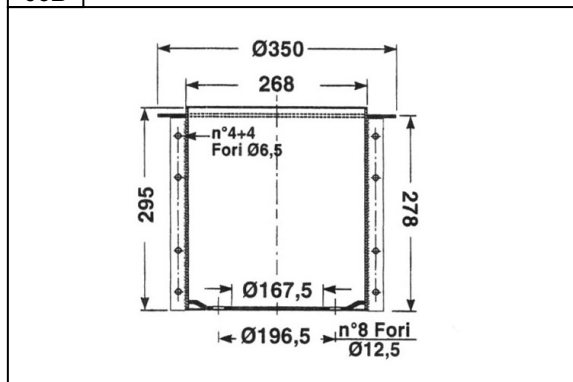
05B



06A



06B





ZWEEGERS PZ



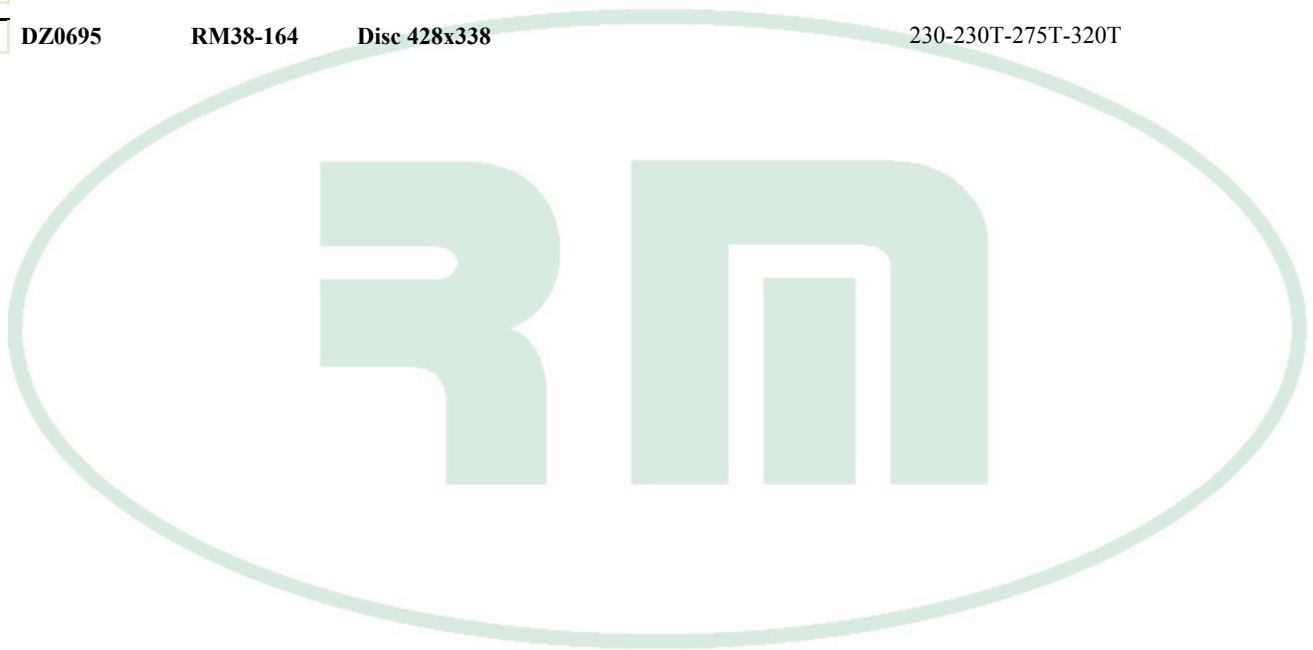
Pos.	Orig. Ref.	RIMA Ref.	Description	Application	Pack.
Cutterbar					
	ET51	RM38-170	Cover for soucer ET049	CM210-CM211-CM212	1
	GT017	RM38-106	Horizontal shaft	CM165	1
	GT150	RM38-017	Vertical shaft	CM165-GT256	1
	GT256	RM38-017	Vertical shaft	CM165	1
	GT64	RM38-176	Sprocket	CM165	1
	RM38-075	RM38-075	Protection	tutti i modelli	1
01A	CM15	RM34-167	Blade 105x46x3 hole 21		25
	MT452S	RM34-005	Blade 96x40x3 hole 19	096 D	25
	MT52S	RM34-001	Blade 88x40x3 hole 19	088 D	25
	XD570	RM34-140	Blade 107x50x4 hole 19		25
01B	TT97	RM34-006	Blade 96x40x3 hole 19	096 P	25
01C	CM120	RM34-009	Blade 105x46x3 hole 21	105 PZ	25
	CM120/108	RM34-027	Blade 108x46x3 hole 21	108 PZ	25
01H	DM303	RM34-131	Blade 98x40x4 lh hole 16,2		25
	DM304	RM34-132	Blade 98x40x4 rh hole 16,2		25
01L	CM137	RM34-129	Blade 106x47x3 lh hole 21		25
	CM138	RM34-130	Blade 106x47x3 rh hole 21		25
	DN382	RM34-133	Blade 106x47x3 rh hole 19		25
	DN383	RM34-134	Blade 106x47x3 lh hole 19		25
	GM165	RM34-135	Blade 112x48x4 lh hole 18,5		25
	GM166	RM34-136	Blade 112x48x4 rh hole 18,5		25
	TA321	RM34-137	Blade 93x47x4 lh hole 19	TF71 spessore 4mm	25
	TA322	RM34-138	Blade 93x47x4 rh hole 19	TF70 spessore 4mm	25
	TF70	RM34-019	Blade 93x49x3 rh hole 19		25
	TF71	RM34-020	Blade 93x49x3 lh hole 19		25
02	EU056	RM46-057	Retainer		1
	PZ57	RM46-080	Retainer		1
	TF012	RM46-056	Retainer		1
02A	PZ0243	RM46-043	Retainer		1
02B	PZ0250	RM46-006	Retainer		1
02C	PZ116	RM46-005	Retainer	Mod.165	1
02D	PZ86	RM46-008	Retainer	doppia lungh. 450mm	1
02E	PZ87	RM46-009	Retainer	doppia lungh. 570mm	1
03	RM37-006	RM37-006	Retainer	testa diam. 18mm	10
	RM37-008	RM37-008	Retainer pin	testa diam. 20mm	10
04	GA09	RM38-109	Soucer diam.470mm	CM215	1
04A	CM060	RM38-055	Soucer diam.590mm	CM135	1
04B	GT062	RM38-056	Soucer diam.735mm	CM165	1



ZWEEGERS PZ



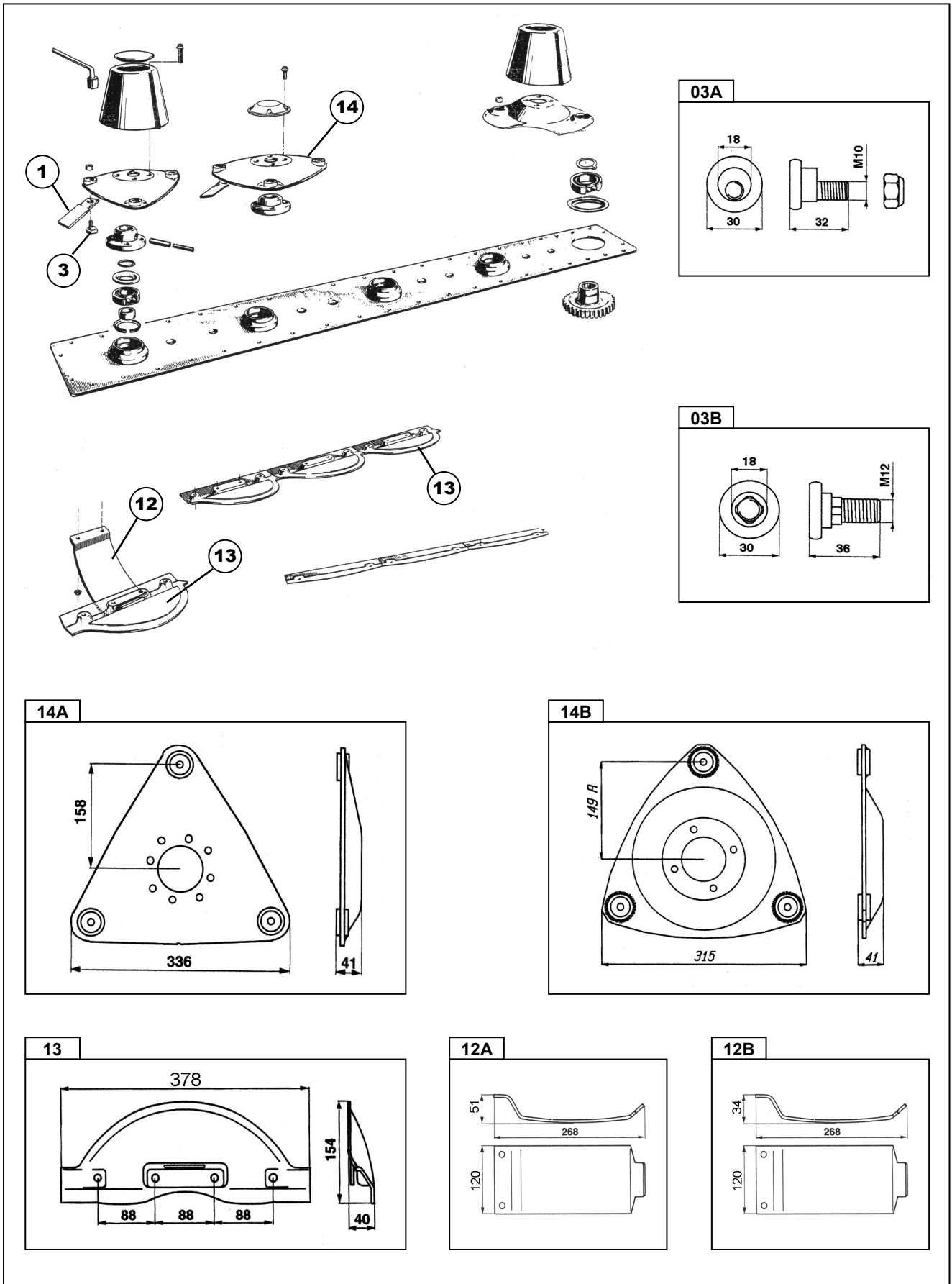
Pos.	Orig. Ref.	RIMA Ref.	Description	Application	Pack.
04C	TT020	RM38-057	Soucer diam.862mm	CM185 / TT096	1
04D	ET049	RM38-013	Soucer diam.995mm	CM210-CM211-CM212	1
05	CM063	RM38-052	Cutting disc diam.600mm	CM135	1
	GA0161	RM38-108	Cutting disc diam.492mm with drum	CM215	1
05A	GT061	RM38-053	Cutting disc diam.780mm with drum	CM165	1
05B	TT021	RM38-054	Cutting disc diam.900mm	CM185	1
06	DM092	RM38-163	Drum 335x260		1
06A	PZ165	RM38-058	Drum	CM165	1
06B	ET039	RM38-018	Drum 308x395	CM185-CM210	1
08	GT060	RM38-080	Hub for soucer	CM165	1
09	DZ0695	RM38-164	Disc 428x338	230-230T-275T-320T	1





VICON

Barra Falciante - *Cutterbar*





VICON



Pos.	Orig. Ref.	RIMA Ref.	Description	Application	Pack.
Cutterbar					
	99417936		Triangular disc		1
	79220019	RM38-193	Kit		1
	90015853	RM38-212	Stone guard	CM240-CM241	1
	90020041	RM38-196	Ring		1
	90296323	RM38-207	Sprocket		1
	90296324	RM38-208	Sprocket		1
01L	58699	RM34-021	Blade 120x50x4 lh hole 18,5		25
	58700	RM34-022	Blade 120x50x4 rh hole 18,5		25
	61559	RM34-050	Blade 107x48x4 lh hole 18,5	VN90261559=VF16503363	25
	61560	RM34-051	Blade 107x48x4 rh hole 18,5	VN90261560	25
03A	81160K	RM47-009	Bolt		10
03B	B1374593	RM47-046	Bolt		10
12A	90062054	RM38-114	Skid		1
12B	90066591	RM38-115	Skid	CM165-CM240	1
13	90015923	RM38-103	Stone guard	CM165-CM240	1
14A	90016529	RM38-102	Triangular disc	CM165-CM240 KV1019894	1
14B	90014856	RM38-102	Triangular disc		1

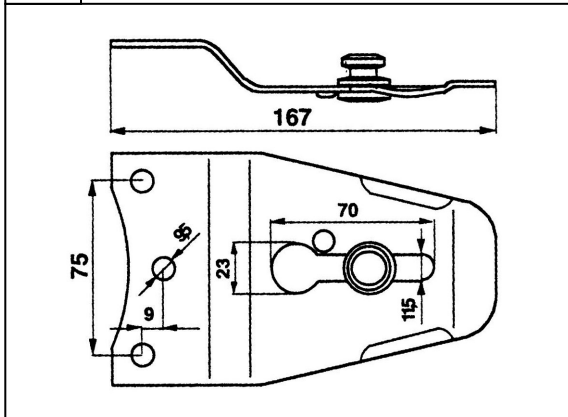


WELGER

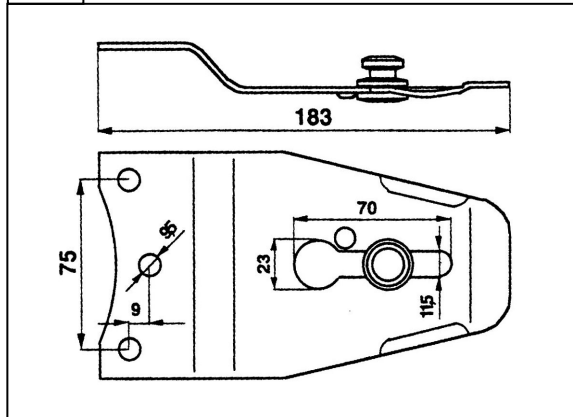
Barra Falciante - *Cutterbar*



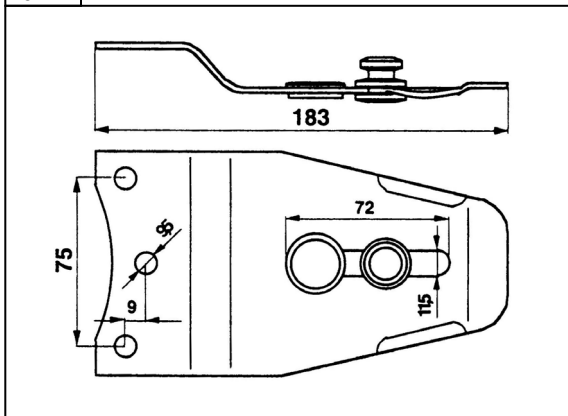
02A



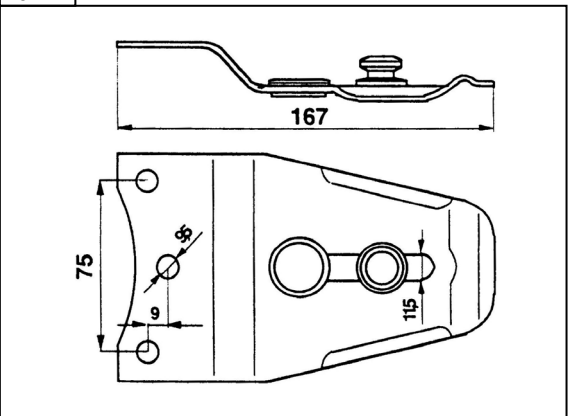
02B



02C



02E



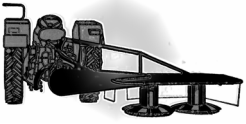


WELGER



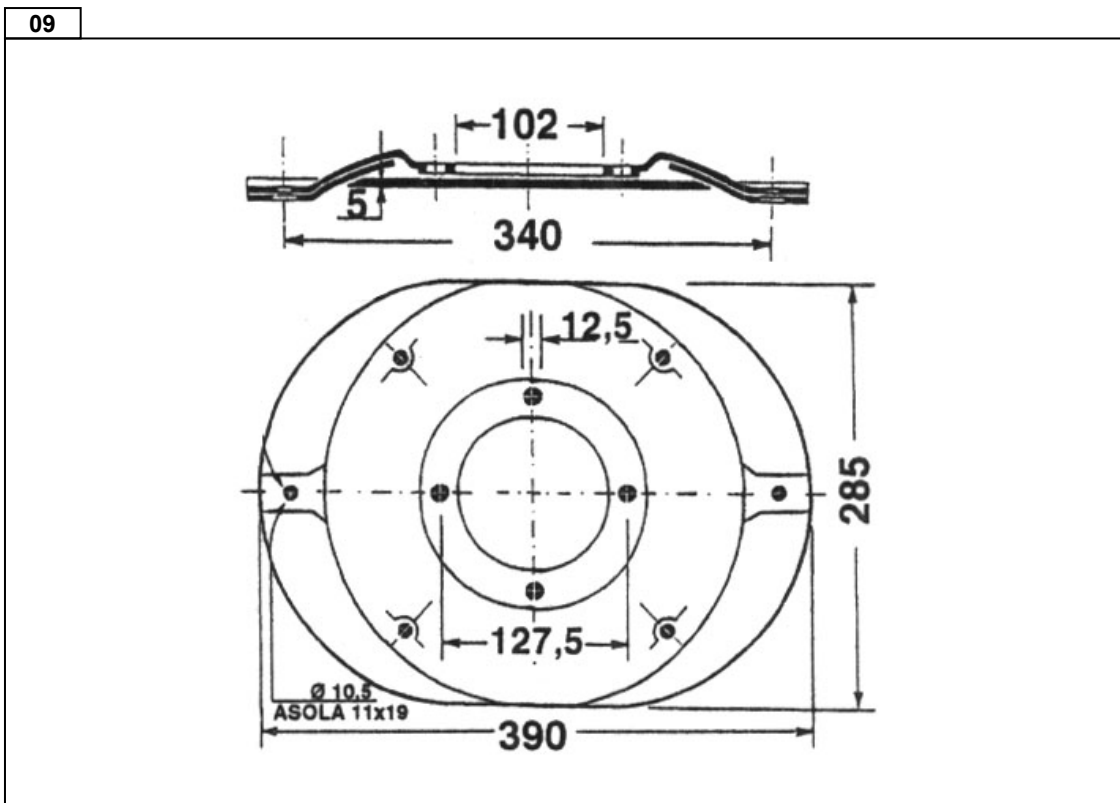
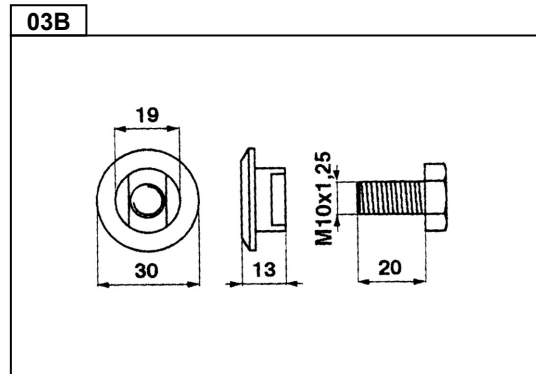
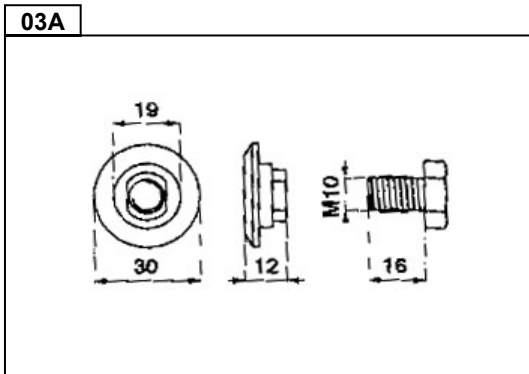
Pos.	Orig. Ref.	RIMA Ref.	Description	Application	Pack.
Cutterbar					
01L	226611657		Blade 108x40x3 rh hole 19	REFORM	25
	226611658		Blade 108x40x3 lh hole 19	REFORM	25
02A	3202.01.03.32	RM46-039	Retainer		1
02B	3208.01.03.28	RM46-040	Retainer		1
02C	3208.01.03.47	RM46-041	Retainer	225611956 REFORM	1
02D	3290.05.01.09	RM46-035	Retainer		1
	3290.05.01.10	RM46-035	Retainer		1
03	RM47-037	RM47-037	Bolt	solo per 3290050109 e 3208010347	10
	RM47-038	RM47-038	Bolt	solo per 3202010332 e 3208010328	10
	RM47-039	RM47-039	Safety lock	solo per 3290050109 e 3208010347	10





BCS

Barra Falciante - *Cutterbar*





BCS



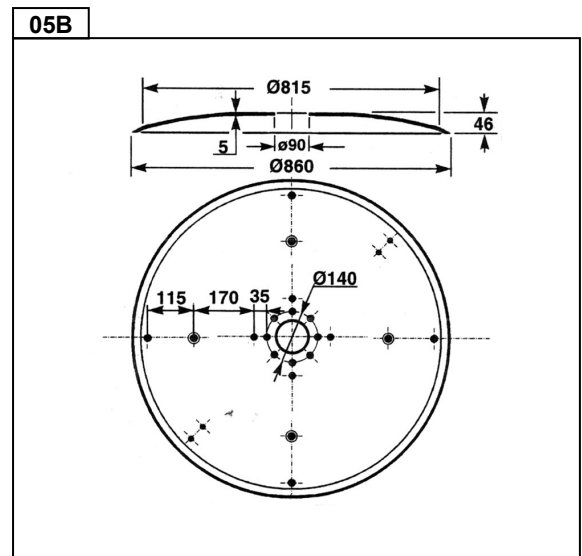
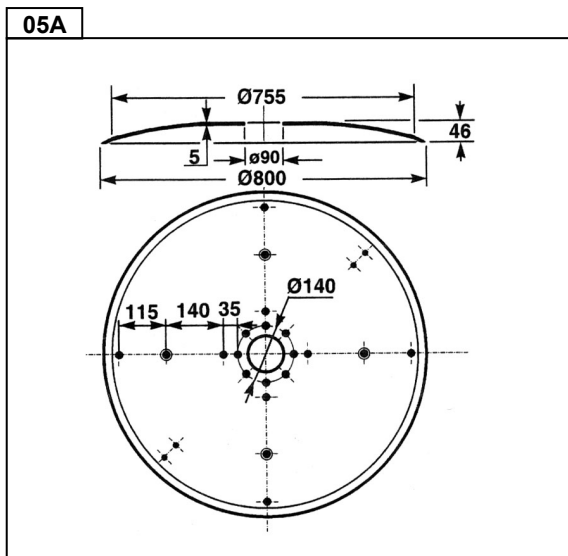
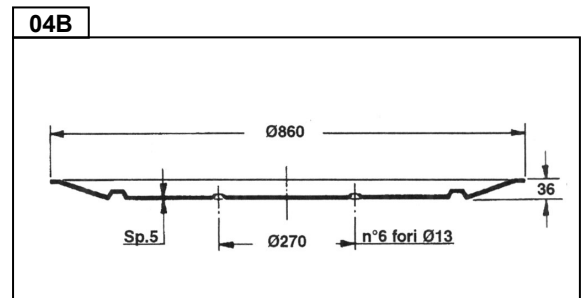
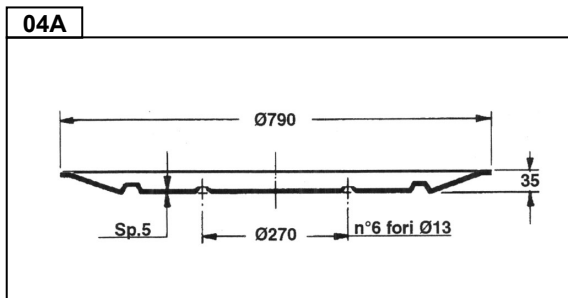
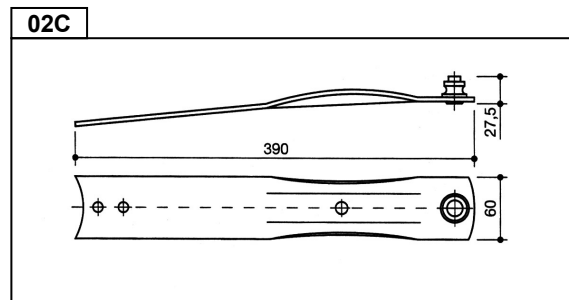
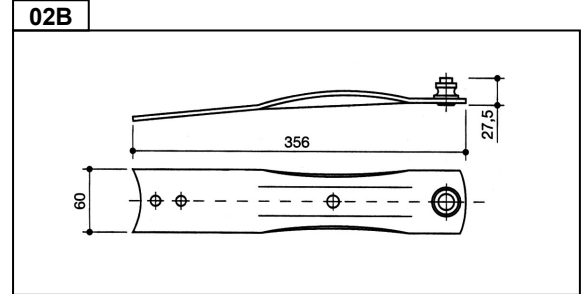
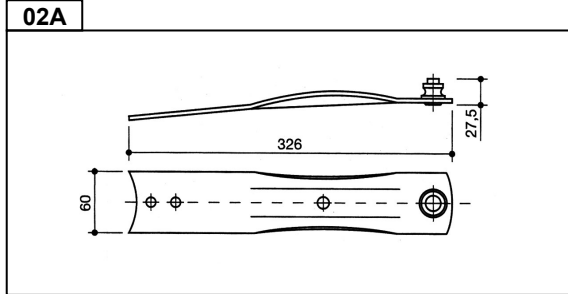
Pos.	Orig. Ref.	RIMA Ref.	Description	Application	Pack.
Cutterbar					
01A	58029045	RM34-007	Blade 98x40x3 hole 19	098 D	25
01L	58029095	RM34-015	Blade 100x40x3 lh hole 19		25
	58029096	RM34-016	Blade 100x40x3 lh hole 19		25
	58031192	RM34-067	Blade 94x48x4 rh hole 19		25
	58031193	RM34-068	Blade 94x48x4 lh hole 19		25
	58036090	RM34-038	Blade 98x48x4 rh hole 19	121712	25
	58036091	RM34-039	Blade 98x48x4 lh hole 19	121713	25
03A	56229614	RM47-014	Bolt	x coltello sp.3mm	10
03B	56529618	RM47-015	Bolt	x coltello sp.4mm	10
	56531191	RM47-015	Bolt	x coltello sp.4mm	10
09	59029795	RM38-107	Cutting disc	ORIGINALE	1





BELLON

Barra Falciante - *Cutterbar*



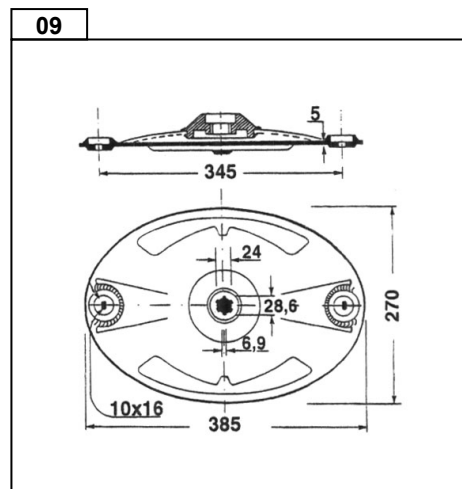
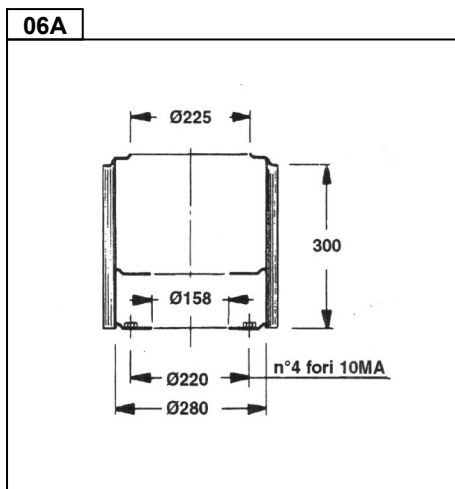
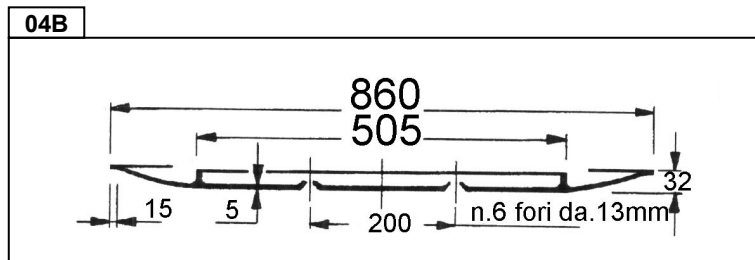
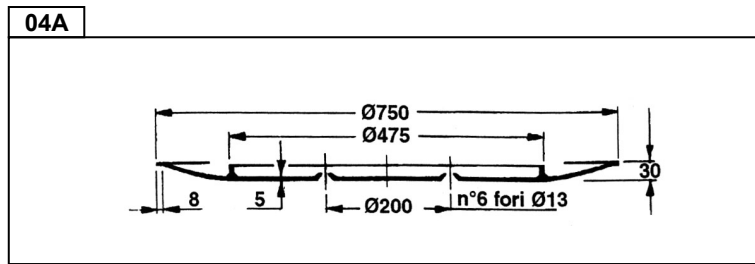
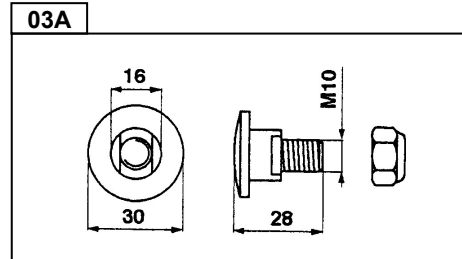
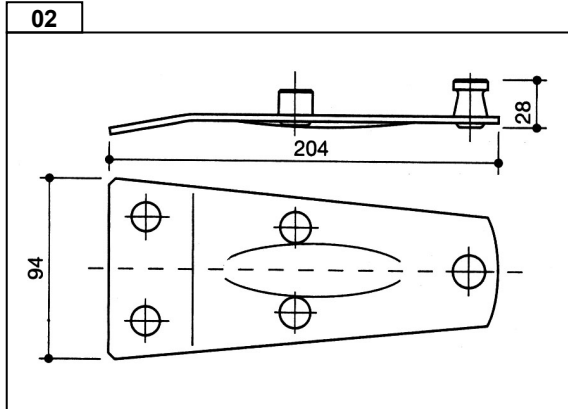


Pos.	Orig. Ref.	RIMA Ref.	Description	Application	Pack.
Cutterbar					
01A	1803364	RM34-010	Blade 108x46x3 hole 21	108 D	25
01B	1803365	RM34-011	Blade 108x46x3 hole 21	108 P	25
	1832118		Blade 118x50x4 hole 21		25
01H	1832532	RM34-072	Blade 107x45x4 lh hole 21	55903310/21	25
	1832533	RM34-071	Blade 107x45x4 rh hole 21	55903210/21	25
02A	0300363	RM46-020	Retainer genuine	FC170	1
02B	0300163	RM46-021	Retainer - genuine	FC190	1
02C	0300463	RM46-022	Retainer - genuine	FC210	1
03	045481-0	RM47-044	Bolt		10
	RM37-007	RM37-007	Retainer pin		10
04	3103470	RM38-225	Soucer	FC210	1
	3132525	RM38-226	Soucer	FC240	1
04A	0300370	RM38-095	Soucer diam.790mm	FC170	1
04B	0300170	RM38-096	Soucer diam.850mm	FC190	1
05	3132523	RM38-224	Cutting disc	FC240	1
05A	0300362	RM38-094	Cutting disc diam.790mm	FC170	1
05B	3103162	RM38-126	Cutting disc diam.850mm	FC190	1



FORT-MORRA

Barra Falciante - *Cutterbar*

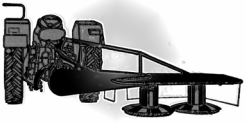




FORT-MORRA

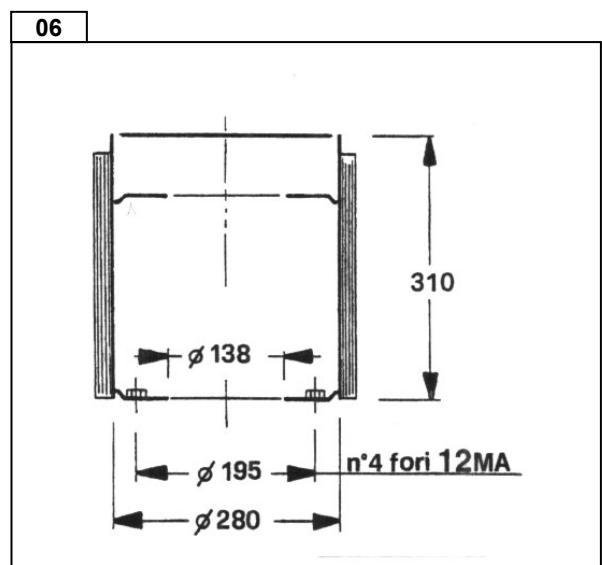
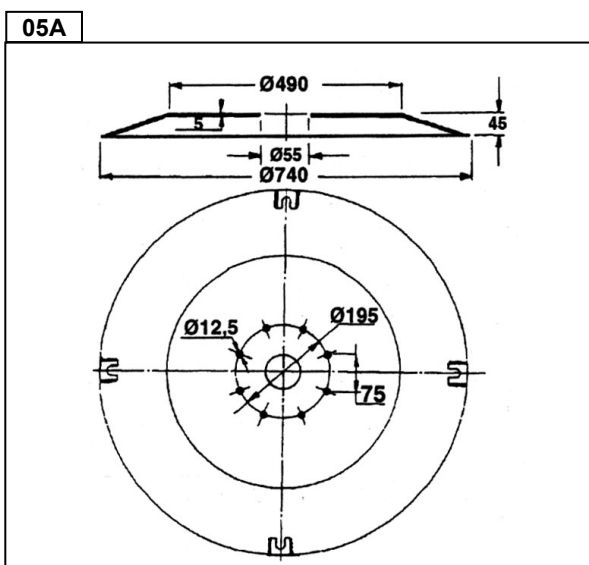
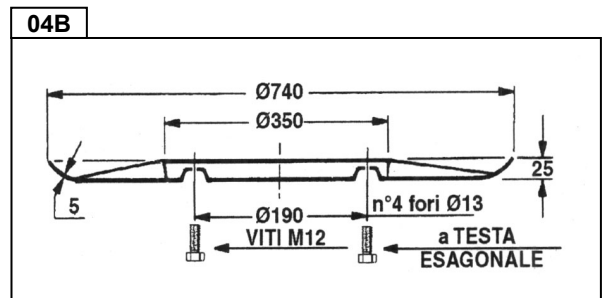
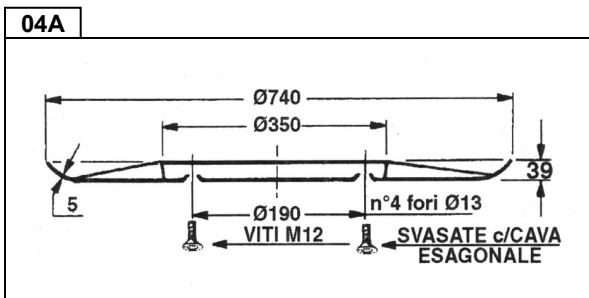
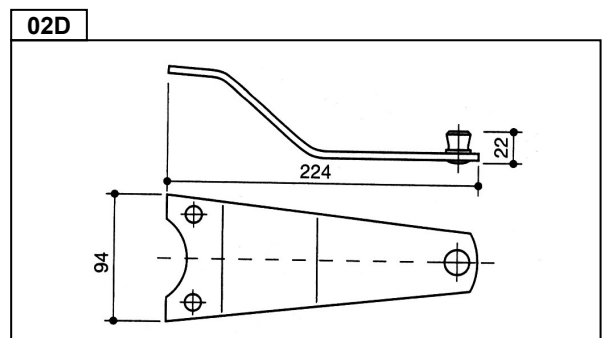
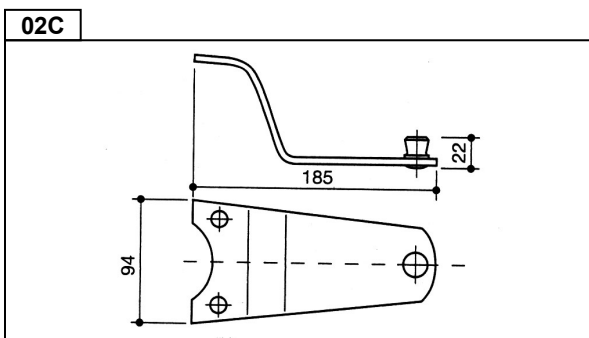
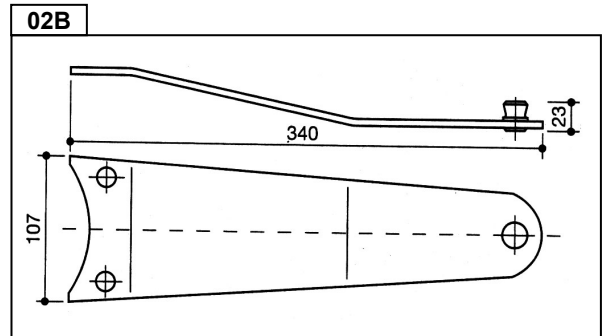
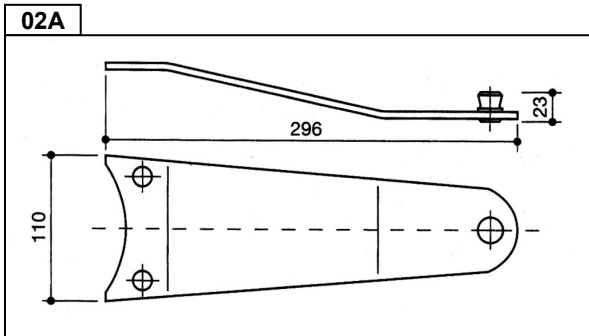


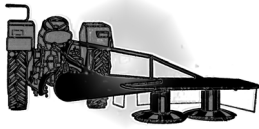
Pos.	Orig. Ref.	RIMA Ref.	Description	Application	Pack.
Cutterbar					
01A	098 D	RM34-007	Blade 98x40x3 hole 19		25
01B	098 P	RM34-008	Blade 98x40x3 hole 19		25
01H	014760		Blade 107x45x4 hole 16 sx		25
	014768		Blade 107x45x4 hole 16 dx		25
	40490005	RM34-034	Blade 98x47x3 rh hole 16	009433	25
	40490006	RM34-035	Blade 98x47x3 lh hole 16	009432	25
02	64602001		Retainer		1
02A		RM46-003	Retainer	Tipo nuovo	1
03	RM37-001		Washer		10
	RM37-002		Retainer pin		10
03A		RM47-008	Bolt	56210100	10
04		RM38-120	Soucer diam.610mm	mod. F7	1
		RM38-023	Soucer diam.875mm	mod. F9	1
	G1.014	RM38-011	Soucer diam.770mm	mod. F8 = 0656.7882	1
04A		RM38-050	Soucer diam.780mm	Morra mod.165	1
04B		RM38-051	Soucer diam.860mm	Morra mod.185	1
05		RM38-127	Cutting disc diam.860mm	Morra mod.185	1
		RM38-021	Cutting disc diam.875mm	mod. F9	1
		RM38-049	Cutting disc diam.780mm	Morra mod.165	1
	G1.015	RM38-020	Cutting disc diam.785mm	mod. F8	1
06		RM38-093	Drum	Morra mod.165	1
06A		RM38-024	Drum	mod. F8-F9	1
07		RM38-121	Disc holder	mod. F8	1
09		RM38-251	Disc		1



GALFRÈ

Barra Falciante - *Cutterbar*





Pos.	Orig. Ref.	RIMA Ref.	Description	Application	Pack.
Cutterbar					
01A	108 D	RM34-010	Blade 108x47x3 rh hole 21		25
	108 D/19	RM34-150	Blade 108x40x4 rh hole 19		25
01B	108 P	RM34-011	Blade 108x46x3 hole 21		25
01H	108 DX	RM34-069	Blade 108x47x3 sx hole 21		25
	108 SX	RM34-070	Blade 108x47x3 lh hole 21		25
01L	108 DX/19	RM34-151	Blade 108x40x4 hole 19		25
	108 SX/19	RM34-152	Blade 108x40x4 lh hole 19		25
	434985	RM34-116	Blade 108x47x4 lh hole 19		25
	434986	RM34-117	Blade 108x47x4 hole 19		25
02A	111165	RM46-010	Retainer	Mod.165	1
02B	111185	RM46-011	Retainer	Mod.185	1
02C		RM46-012	Retainer	Mod.210	1
02D		RM46-073	Retainer	Mod.260	1
03		RM37-004	Retainer tip		10
	04047152K	RM47-049	Bolt		10
04		RM38-030	Soucer diam.850mm 4 holes reinf.	Mod.185	1
		RM38-027	Soucer diam.730mm 6 holes	Mod.165	1
		RM38-029	Soucer diam.740mm 6 holes reinf.	Mod.165	1
		RM38-123	Soucer diam.625mm	Mod.135	1
		RM38-260	Soucer diam.560mm	Mod.FR260	1
	FR120	RM38-270	Soucer diam.450mm	Mod.FR210	1
04A		RM38-211	Soucer diam.740mm 4 holes reinf.	2a serie viti TE	1
04B		RM38-028	Soucer diam.740mm 4 holes reinf.	1a serie viti TSV	1
05		RM38-122	Cutting disc diam.850mm	Mod.185	1
05A	165-099	RM38-026	Cutting disc diam.740mm	Mod.165	1
06	165-095	RM38-031	Drum	Mod.165	1

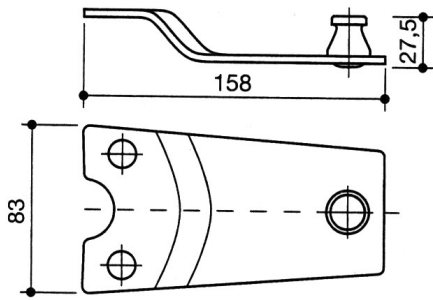


MARANGON

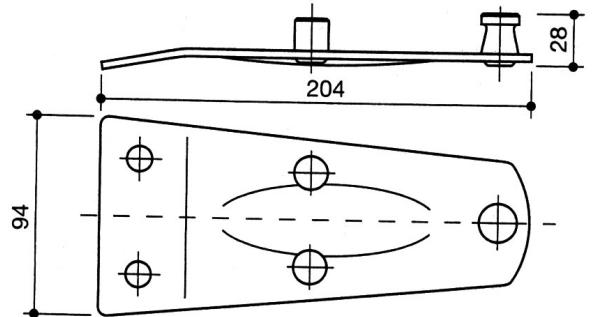
Barra Falciante - *Cutterbar*



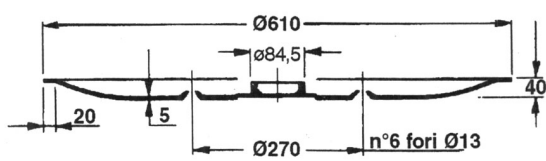
02A



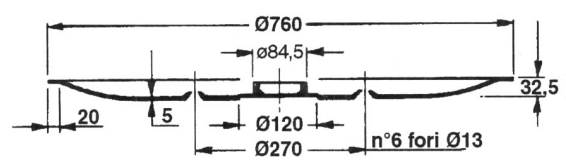
02B



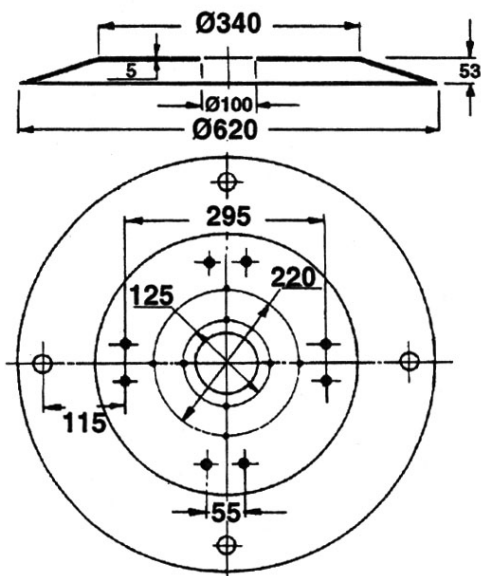
04A



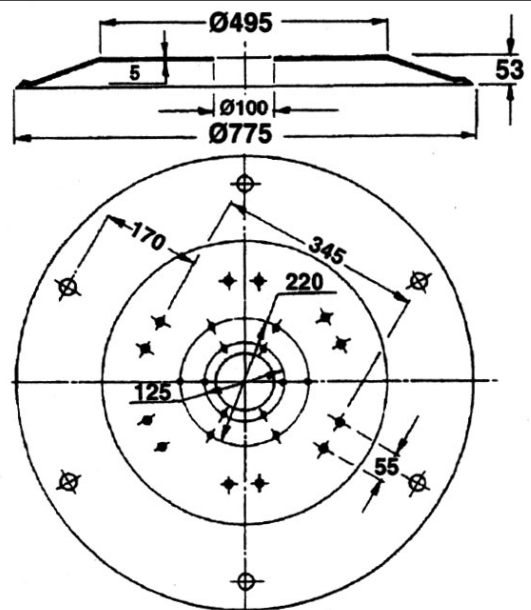
04B



05A

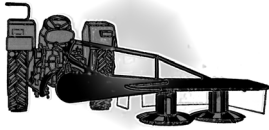


05B





Pos.	Orig. Ref.	RIMA Ref.	Description	Application	Pack.
Cutterbar					
01A	098 D	RM34-007	Blade 98x40x3 hole 19		25
	108 D	RM34-010	Blade 108x46x3 hole 21		25
01B	098 P	RM34-008	Blade 98x40x3 hole 19		25
01C	108 PZ	RM34-027	Blade 108x46x3 hole 21		25
01E	56110300RM	RM34-031	Blade 116x50/35x3 hole 20,5x23		25
01H	100 MEL	RM34-061	Blade 100x48x4 lh hole 21		25
	100 MER	RM34-060	Blade 100x48x4 rh hole 21		25
01L	56110400	RM34-055	Blade 126x48x4 rh hole 20,5x23		25
	56110900	RM34-056	Blade 126x48x4 lh hole 20,5x23		25
02A		RM46-074	Retainer	tipo nuovo Mod.235RGC	1
02B	020040315	RM46-004	Retainer	uguale 030040315 Mod.2000-2500	1
03	04047152K	RM47-049	Bolt	solo x coltelli sp.4mm	10
04		RM38-278	Soucer	Mod.192	1
		RM38-125	Soucer diam.910mm	Mod.185	1
		RM38-281	Disc		1
04A		RM38-043	Soucer diam.610mm	Mod.135	1
04B		RM38-044	Soucer diam.760mm	Mod.165	1
05		RM38-124	Cutting disc diam.920mm	Mod.185	1
05A		RM38-041	Cutting disc diam.620mm	Mod.135	1
05B		RM38-042	Cutting disc diam.775mm	Mod.165	1
06		RM38-279	Drum	Mod.165	1
		RM38-280	Drum	Mod.185	1



COMER



Pos.	Orig. Ref.	RIMA Ref.	Description	Application	Pack.
Cutterbar					
01E	04077014	RM34-031	Blade 116x50/35x3 hole 20,5x23	56110300RM	25
01L	04047015	RM34-025	Blade 107x49x3 lh hole 21		25
	04047015/4		Blade 107x49x4 lh hole 21		25
	04047016	RM34-026	Blade 107x49x3 rh hole 21		25
	04047016/4		Blade 107x49x4 rh hole 21		25
03	04047103K	RM47-002	Bolt	Coltelli 3mm sp.	10
	04047152K	RM47-049	Bolt	Coltelli 4mm sp.	10



GASPARDO



Pos.	Orig. Ref.	RIMA Ref.	Description	Application	Pack.
Cutterbar					
03	04047103K	RM47-002	Bolt		10
1E	56110300RM	RM34-031	Blade 116x50/35x3 hole 20,5x23		25
1H	512	RM34-013	Blade 93x40x3 rh hole 16	56151200	25
	513	RM34-014	Blade 93x40x3 lh hole 16	56151300	25



GRIBALDI & SALVIA



Pos.	Orig. Ref.	RIMA Ref.	Description	Application	Pack.
Cutterbar					
01L	26013D	RM34-015	Blade 100x40x3 rh hole 19	58029095	25
	26013S	RM34-016	Blade 100x40x3 lh hole 19	58029096	25
	46291	RM34-065	Blade 100x48x4 rh hole 19		25
	46292	RM34-066	Blad 100x48x4 lh hole 19		25
03	46338	RM47-045	Bolt	x coltelli sp.4mm	10
09	40141	RM38-116	Disc HD	ex 26122	1
	40143	RM38-117	Triangular disc HD	ex 26012	1
10	40142	RM38-119	Disc HD	ex 26138	1
	40144	RM38-118	Disc HD	ex 26136	1



JF FREUDENDAHL



Pos.	Orig. Ref.	RIMA Ref.	Description	Application	Pack.
Cutterbar					
01A	1380-0001	RM34-154	Blade 94x50x4 hole 20,5x24,3		25
	1380-0025	RM34-164	Blade 96x40x4 hole 19	096 D spessore 4mm	25
	1380-0027	RM34-156	Blade 114x50x4 hole 19		25
01E	1380-0013	RM34-157	Blade 132x50x4 hole 20x23		25
01L	1380-0014	RM34-158	Blade 114x47x4 rh hole 19		25
	1380-0015	RM34-159	Blade 114x47x4 lh hole 19		25
	1380-0021	RM34-160	Blade 92,5x48x4 rh hole 20,5x24,3		25
	1380-0022	RM34-161	Blade 92,5x48x4 lh hole 20,5x24,3		25
	1380-0023	RM34-162	Blade 97x47x4 rh hole 19		25
	1380-0024	RM34-163	Blade 97x47x4 lh hole 19		25
03	1219-0809	RM47-012	Bolt	56403000	10
04		RM38-277	Soucer diam.760mm	CM170	1



JOHN DEERE



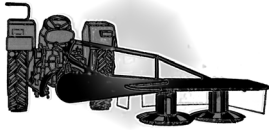
Pos.	Orig. Ref.	RIMA Ref.	Description	Application	Pack.
Cutterbar					
01H	CC19333	RM34-023	Blade 93x40x3 rh hole 16	56151200	25
	CC19336	RM34-024	Blade 93x40x3 lh hole 16	5615310	25
	CC20500	RM34-024	Blade 95x45x3,5 lh hole 16,25	56151310	25
	CC20501	RM34-023	Blade 95x45x3,5 rh hole 16,25	56151210	25
	CC21780	RM34-058	Blade 121x45x4 lh hole 18	56451200	25
	CC21781	RM34-059	Blade 121x45x4 rh hole 18	56451300	25
03	CC19989	RM47-008	Bolt	56210100	10
	CC19994	RM47-007	Bolt	56115800	10



NEW HOLLAND



Pos.	Orig. Ref.	RIMA Ref.	Description	Application	Pack.
Cutterbar					
01H	274096	RM34-013	Blade 93x40x3 lh hole 16	56151200	25
	274097	RM34-014	Blade 93x40x3 rh hole 16	56151300	25
	766726	RM34-023	Blade 95x45x3,5 lh hole 16	56151210	25
	766727	RM34-024	Blade 95x45x3,5 rh hole 16	56151310	25
	784220	RM34-058	Blade 121x45x4 lh hole 18	56451200	25
	784221	RM34-059	Blade 121x45x4 rh hole 18	56451300	25
	853819	RM34-017	Blade 107x45x4 lh hole 18,2	55903210	25
	853820	RM34-018	Blade 107x45x4 rh hole 18,2	55903310	25
03	274092	RM47-008	Bolt M10X21	56150100	10
	687552	RM47-007	Bolt	56115800	10
	766728	RM47-008	Bolt	56210100	10



SIP



Pos.	Orig. Ref.	RIMA Ref.	Description	Application	Pack.
Cutterbar					
01A	152147607	RM34-077	Blade 96x47x3 hole 21		25
01C	105 PZ	RM34-009	Blade 105x46x3 hole 21	CM120	25
01L	153171311	RM34-078	Blade 98x48x4 lh hole 19		25
	153171419	RM34-079	Blade 98x48x4 rh hole 19		25
02	PZ116	RM46-005	Retainer	Mod.165	1
04		RM38-056	Soucer diam.780mm with drum	Mod.165 - GT062	1
05		RM38-228	Cutting disc diam.880mm	Mod.185	1



SLAM



Pos.	Orig. Ref.	RIMA Ref.	Description	Application	Pack.
Cutterbar					
01E	56110300RM	RM34-031	Blade 116x50/35x3 hole 20,5x23	65011130-BR1387	25
03	BR1388	RM47-010	Bolt		10



TAARUP



Pos.	Orig. Ref.	RIMA Ref.	Description	Application	Pack.
Cutterbar					
01	56110500	RM34-126	Blade 131,5x50x4 hole 20,5x23		25
01A	58372000	RM34-127	Blade 109x40x3 hole 20,5		25
01E	16530208	RM34-057	Blade 128x50x4 hole 18,5x20,5		25
	56110200	RM34-033	Blade 160x60/35x4 hole 20,5x23		25
	56110300	RM34-032	Blade 128x50/35x4 hole 20,5x23		25
01L	56110400	RM34-055	Blade 126x48x4 rh hole 20,5x23		25
	56110900	RM34-056	Blade 126x48x4 lh hole 20,5x23		25
03	16545801	RM47-007	Bolt	56115800	10
	56403000	RM47-012	Bolt	12MA	10